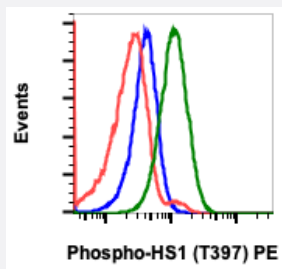


HCLS1 (phospho Y397) monoclonal antibody, clone F12 (PE)

Catalog # MAB23526 Size 100 Reactions

Applications



Flow Cytometry

Flow cytometric analysis of Ramos cells with HCLS1 (phospho Y397) monoclonal antibody, clone F12 (Cat # MAB23526). Unstained as negative control (blue) or untreated (red) or treated with pervanadate (green).

Specification

Product Description	Rabbit monoclonal antibody raised against synthetic phosphopeptide of human HCLS1.
Immunogen	A synthetic phosphopeptide corresponding to residues surrounding Y397 of human HCLS1.
Host	Rabbit
Reactivity	Human
Form	Liquid
Conjugation	PE
Purification	Protein A/G purification
Isotype	IgG1, kappa
Recommend Usage	Flow Cytometry (5 μ L/ 10^6 cells) The optimal working dilution should be determined by the end user.
Storage Buffer	In PBS, pH 7.4 (0.2% BSA, 0.09% sodium azide).
Storage Instruction	Store at 4°C.

Note

This product contains sodium azide: a POISONOUS AND HAZARDOUS SUBSTANCE which should be handled by trained staff only.

Applications

- Flow Cytometry

Flow cytometric analysis of Ramos cells with HCLS1 (phospho Y397) monoclonal antibody, clone F12 (Cat # MAB23526). Unstained as negative control (blue) or untreated (red) or treated with pervanadate (green).

Gene Info — HCLS1

Entrez GeneID	3059
---------------	----------------------

Protein Accession#	P14317
--------------------	------------------------

Gene Name	HCLS1
-----------	-------

Gene Alias	CTTNL, HS1
------------	------------

Gene Description	hematopoietic cell-specific Lyn substrate 1
------------------	---

Omim ID	601306
---------	------------------------

Gene Ontology	Hyperlink
---------------	---------------------------

Other Designations	cortactin-like
--------------------	----------------

Pathway

- [Pathogenic Escherichia coli infection - EHEC](#)
- [Tight junction](#)

Disease

- [Kidney Failure](#)
- [Lupus Erythematosus](#)