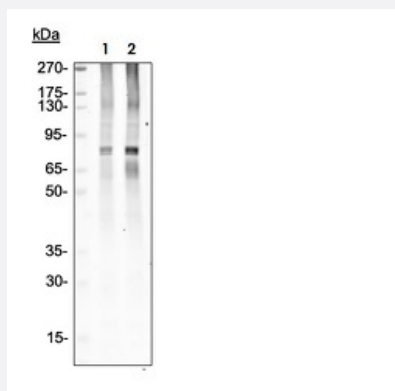


HCLS1 (phospho Y397) monoclonal antibody, clone F12

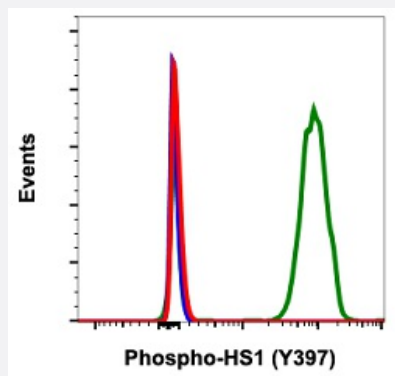
Catalog # MAB23525 Size 200 uL

Applications



Western Blot (Cell lysate)

Western Blot analysis of Ramos cell lysate with HCLS1 (phospho Y397) monoclonal antibody, clone F12 (Cat # MAB23525). Lane 1: untreated or Lane 2: treated with 300 nM Thapsigargin.



Flow Cytometry

Flow cytometric analysis of Ramos cells with HCLS1 (phospho Y397) monoclonal antibody, clone F12 (Cat # MAB23525). Unstained as negative control (blue) or untreated (red) or treated with pervanadate (green).

Specification

Product Description	Rabbit monoclonal antibody raised against synthetic phosphopeptide of human HCLS1.
Immunogen	A synthetic phosphopeptide corresponding to residues surrounding Y397 of human HCLS1.
Host	Rabbit
Reactivity	Human
Form	Liquid

Purification	Protein A/G purification
Isotype	IgG1, kappa
Recommend Usage	Flow Cytometry Western Blot The optimal working dilution should be determined by the end user.
Storage Buffer	In PBS, pH 7.4 (50% glycerol, 0.1% BSA and 0.02% sodium azide).
Storage Instruction	Store at -20°C.
Note	This product contains sodium azide: a POISONOUS AND HAZARDOUS SUBSTANCE which should be handled by trained staff only.

Applications

- Western Blot (Cell lysate)

Western Blot analysis of Ramos cell lysate with HCLS1 (phospho Y397) monoclonal antibody, clone F12 (Cat # MAB23525).
Lane 1: untreated or Lane 2: treated with 300 nM Thapsigargin.

- Flow Cytometry

Flow cytometric analysis of Ramos cells with HCLS1 (phospho Y397) monoclonal antibody, clone F12 (Cat # MAB23525).
Unstained as negative control (blue) or untreated (red) or treated with pervanadate (green).

Gene Info — HCLS1

Entrez GeneID	3059
Protein Accession#	P14317
Gene Name	HCLS1
Gene Alias	CTTNL, HS1
Gene Description	hematopoietic cell-specific Lyn substrate 1
Omim ID	601306
Gene Ontology	Hyperlink
Other Designations	cortactin-like

Pathway

- [Pathogenic Escherichia coli infection - EHEC](#)
- [Tight junction](#)

Disease

- [Kidney Failure](#)
- [Lupus Erythematosus](#)