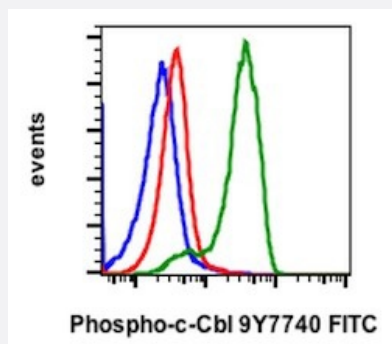


# CBL (phospho Y774) monoclonal antibody, clone R3B8 (FITC)

Catalog # MAB23489

Size 100 Reactions

## Applications



### Flow Cytometry

Flow cytometric analysis of Daudi NE with CBL (phospho Y774) monoclonal antibody, clone R3B8 (FITC) (Cat # MAB23489). Untreated as negative control (blue) or untreated (red) or treated with IFN $\alpha$  + IL-4 + pervanadate (green).

## Specification

Product Description	Rabbit monoclonal antibody raised against synthetic phosphopeptide of human CBL.
Immunogen	A synthetic phosphopeptide corresponding to residues surrounding Y774 of human CBL.
Host	Rabbit
Reactivity	Human, Mouse
Form	Liquid
Conjugation	FITC
Purification	Protein A/G purification
Isotype	IgG1, kappa
Recommend Usage	Flow Cytometry (5 $\mu$ L/10 <sup>6</sup> cells) The optimal working dilution should be determined by the end user.
Storage Buffer	In PBS, pH 7.4 (0.2% BSA, 0.09% sodium azide).
Storage Instruction	Store at 4°C.

## Note

This product contains sodium azide: a POISONOUS AND HAZARDOUS SUBSTANCE which should be handled by trained staff only.

## Applications

- Flow Cytometry

Flow cytometric analysis of Daudi NE with CBL (phospho Y774) monoclonal antibody, clone R3B8 (FITC) (Cat # MAB23489).  
Untreated as negative control (blue) or untreated (red) or treated with IFN $\alpha$  + IL-4 + pervanadate (green).

## Gene Info — CBL

Entrez GeneID [867](#)

Gene Name CBL

Gene Alias C-CBL, CBL2, RNF55

Gene Description Cas-Br-M (murine) ecotropic retroviral transforming sequence

Omim ID [165360](#)

Gene Ontology [Hyperlink](#)

**Gene Summary** The cbl oncogene was first identified as part of a transforming retrovirus which induces mouse pre-B and pro-B cell lymphomas. As an adaptor protein for receptor protein-tyrosine kinases, it positively regulates receptor protein-tyrosine kinase ubiquitination in a manner dependent upon its variant SH2 and RING finger domains. Ubiquitination of receptor protein-tyrosine kinases terminates signaling by marking active receptors for degradation. [provided by RefSeq]

**Other Designations** oncogene CBL2

## Pathway

- [Chronic myeloid leukemia](#)
- [Endocytosis](#)
- [ErbB signaling pathway](#)
- [Insulin signaling pathway](#)
- [Jak-STAT signaling pathway](#)
- [Pathways in cancer](#)

- [T cell receptor signaling pathway](#)
- [Ubiquitin mediated proteolysis](#)

## Disease

- [Diabetes Mellitus](#)
- [Disease Progression](#)
- [Genetic Predisposition to Disease](#)
- [Leukemia](#)
- [Tobacco Use Disorder](#)