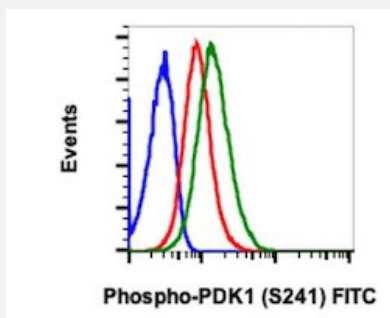


# PDPK1 (phospho S241) monoclonal antibody, clone F7 (FITC)

Catalog # MAB23486      Size 100 Reactions

## Applications



### Flow Cytometry

Flow cytometric analysis of HEK 293T cells with PDPK1 (phospho S241) monoclonal antibody, clone F7 (FITC) (Cat # MAB23486). Unstained K252a treated cells (blue) or treated with K252a (red) or with pervanadate (green).

## Specification

<b>Product Description</b>	Rabbit monoclonal antibody raised against synthetic phosphopeptide of human PDPK1.
<b>Immunogen</b>	A synthetic phosphopeptide corresponding to residues surrounding S241 of human PDPK1.
<b>Host</b>	Rabbit
<b>Reactivity</b>	Human
<b>Form</b>	Liquid
<b>Conjugation</b>	FITC
<b>Purification</b>	Protein A/G purification
<b>Isotype</b>	IgG1, kappa
<b>Recommend Usage</b>	Flow Cytometry (5 $\mu$ L/ $10^6$ cells) The optimal working dilution should be determined by the end user.
<b>Storage Buffer</b>	In PBS, pH 7.4 (0.2% BSA, 0.09% sodium azide).
<b>Storage Instruction</b>	Store at 4°C.

**Note**

This product contains sodium azide: a POISONOUS AND HAZARDOUS SUBSTANCE which should be handled by trained staff only.

## Applications

- Flow Cytometry

Flow cytometric analysis of HEK 293T cells with PDPK1 (phospho S241) monoclonal antibody, clone F7 (FITC) (Cat # MAB23486). Unstained K252a treated cells (blue) or treated with K252a (red) or with pervanadate (green).

## Gene Info — PDPK1

Entrez GeneID	<a href="#">5170</a>
Gene Name	PDPK1
Gene Alias	MGC20087, MGC35290, PDK1, PRO0461
Gene Description	3-phosphoinositide dependent protein kinase-1
Omim ID	<a href="#">605213</a>
Gene Ontology	<a href="#">Hyperlink</a>
Other Designations	PkB kinase like gene 1 PkB-like 1 protein kinase

## Pathway

- [Endometrial cancer](#)
- [Focal adhesion](#)
- [Insulin signaling pathway](#)
- [mTOR signaling pathway](#)
- [Non-small cell lung cancer](#)
- [PPAR signaling pathway](#)
- [Prostate cancer](#)

## Disease

- [Adenocarcinoma](#)
- [Thyroid Neoplasms](#)