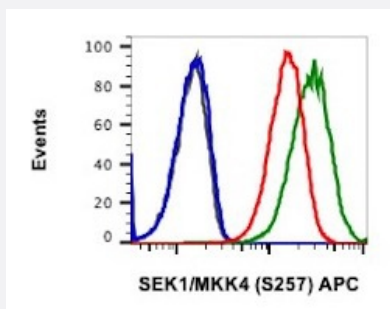


MAP2K4 (phospho S257) monoclonal antibody, clone C5 (APC)

Catalog # MAB23474 Size 100 Reactions

Applications



Flow Cytometry

Flow cytometric analysis of HEK 293T cells with MAP2K4 (phospho S257) monoclonal antibody, clone C5 (APC) (Cat # MAB23474). Unstained and untreated cells as negative control (blue) or treated with lambda phosphatase (red) or treated with UV (100 mJ/cm²)+TPA (200nM, 1 hr recovery ; green).

Specification

Product Description	Rabbit monoclonal antibody raised against synthetic phosphopeptide of human MAP2K4.
Immunogen	A synthetic phosphopeptide corresponding to residues surrounding S257 of human MAP2K4.
Host	Rabbit
Reactivity	Human, Macaque, Mouse, Rat
Form	Liquid
Conjugation	APC
Purification	Protein A/G purification
Isotype	IgG1, kappa
Recommend Usage	Flow Cytometry (5 uL/10 ⁶ cells) The optimal working dilution should be determined by the end user.
Storage Buffer	In PBS, pH 7.4 (0.2% BSA, 0.09% sodium azide).
Storage Instruction	Store at 4°C.

Note

This product contains sodium azide: a POISONOUS AND HAZARDOUS SUBSTANCE which should be handled by trained staff only.

Applications

- Flow Cytometry

Flow cytometric analysis of HEK 293T cells with MAP2K4 (phospho S257) monoclonal antibody, clone C5 (APC) (Cat # MAB23474). Unstained and untreated cells as negative control (blue) or treated with lambda phosphatase (red) or treated with UV (100 mJ/cm²)+TPA (200nM, 1 hr recovery ; green).

Gene Info — MAP2K4

Entrez GeneID	6416
---------------	----------------------

Gene Name	MAP2K4
-----------	--------

Gene Alias	JNKK, JNKK1, MAPKK4, MEK4, MKK4, PRKMK4, SEK1, SERK1
------------	--

Gene Description	mitogen-activated protein kinase kinase 4
------------------	---

Omim ID	601335
---------	------------------------

Gene Ontology	Hyperlink
---------------	---------------------------

Gene Summary	This gene encodes a dual specificity protein kinase that belongs to the Ser/Thr protein kinase family. This kinase is a direct activator of MAP kinases in response to various environmental stresses or mitogenic stimuli. It has been shown to activate MAPK8/JNK1, MAPK9/JNK2, and MAPK14/p38, but not MAPK1/ERK2 or MAPK3/ERK3. This kinase is phosphorylated, and thus activated by MAP3K1/MEKK. The knockout studies in mice suggested the roles of this kinase in mediating survival signal in T cell development, as well as in the organogenesis of liver. [provided by RefSeq]
--------------	--

Other Designations	JNK activating kinase 1 JNK-activated kinase 1 MAP kinase kinase 4 MAPK/ERK kinase 4 SAPK/ERK kinase 1 c-Jun N-terminal kinase kinase 1 dual specificity mitogen-activated protein kinase kinase 4
--------------------	--

Pathway

- [Epithelial cell signaling in Helicobacter pylori infection](#)
- [ErbB signaling pathway](#)
- [Fc epsilon RI signaling pathway](#)
- [GnRH signaling pathway](#)

- [MAPK signaling pathway](#)
- [Toll-like receptor signaling pathway](#)

Disease

- [Colorectal Neoplasms](#)
- [Genetic Predisposition to Disease](#)
- [Lung Neoplasms](#)
- [Pancreatic cancer](#)
- [Pancreatic Neoplasms](#)