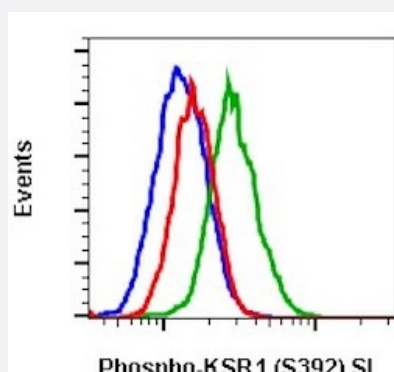


KSR1 (phospho S392) monoclonal antibody, clone 3A4 (SureLight 488)

Catalog # MAB23460 Size 100 Reactions

Applications



Flow Cytometry

Flow cytometric analysis of HeLa cells with KSR1 (phospho S392) monoclonal antibody, clone 3A4 (SureLight 488) (Cat # MAB23460). Untreated and unstained as negative control (blue) or treated with lambda phosphatase and stained (red) or untreated and stained (green).

Specification

Product Description	Rabbit monoclonal antibody raised against synthetic phosphopeptide of human KSR1.
Immunogen	A synthetic phosphopeptide corresponding to residues surrounding S392 of human KSR1.
Host	Rabbit
Reactivity	Human, Mouse
Form	Liquid
Conjugation	SureLight 488
Purification	Protein A/G purification
Isotype	IgG1, kappa
Recommend Usage	Flow Cytometry (5 μ L/ 10^6 cells) The optimal working dilution should be determined by the end user.
Storage Buffer	In PBS, pH 7.4 (0.2% BSA, 0.09% sodium azide).

Storage Instruction

Store at 4°C.

Note

This product contains sodium azide: a POISONOUS AND HAZARDOUS SUBSTANCE which should be handled by trained staff only.

Applications

- Flow Cytometry

Flow cytometric analysis of HeLa cells with KSR1 (phospho S392) monoclonal antibody, clone 3A4 (SureLight 488) (Cat # MAB23460). Untreated and unstained as negative control (blue) or treated with lambda phosphatase and stained (red) or untreated and stained (green).

Gene Info — KSR1

Entrez GeneID[8844](#)**Gene Name**

KSR1

Gene Alias

KSR, RSU2

Gene Description

kinase suppressor of ras 1

Omim ID[601132](#)**Gene Ontology**[Hyperlink](#)**Other Designations**

kinase suppressor of ras

Disease

- [Tobacco Use Disorder](#)