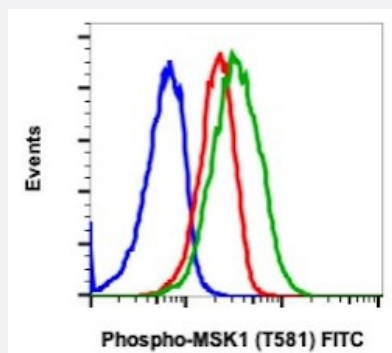


RPS6KA5 (phospho T581) monoclonal antibody, clone A5 (FITC)

Catalog # MAB23456

Size 100 Reactions

Applications



Flow Cytometry

Flow cytometric analysis of COS-7 cells with RPS6KA5 (phospho T581) monoclonal antibody, clone A5 (FITC) (Cat # MAB23456). Untreated and untreated (blue) or untreated (red) or treated with TPA + CalA (green).

Specification

Product Description	Rabbit monoclonal antibody raised against synthetic phosphopeptide of human RPS6KA5.
Immunogen	A synthetic phosphopeptide corresponding to residues surrounding T581 of human RPS6KA5.
Host	Rabbit
Reactivity	Human, Mouse
Form	Liquid
Conjugation	FITC
Purification	Protein A/G purification
Isotype	IgG1, kappa
Recommend Usage	Flow Cytometry (5 μ L/ 10^6 cells) The optimal working dilution should be determined by the end user.
Storage Buffer	In PBS, pH 7.4 (0.2% BSA, 0.09% sodium azide).
Storage Instruction	Store at 4°C.

Note

This product contains sodium azide: a POISONOUS AND HAZARDOUS SUBSTANCE which should be handled by trained staff only.

Applications

- Flow Cytometry

Flow cytometric analysis of COS-7 cells with RPS6KA5 (phospho T581) monoclonal antibody, clone A5 (FITC) (Cat # MAB23456). Unstained and untreated (blue) or untreated (red) or treated with TPA + CalA (green).

Gene Info — RPS6KA5

Entrez GeneID	9252
Gene Name	RPS6KA5
Gene Alias	MGC1911, MSK1, MSPK1, RLPK
Gene Description	ribosomal protein S6 kinase, 90kDa, polypeptide 5
Omim ID	603607
Gene Ontology	Hyperlink
Gene Summary	90kDa
Other Designations	mitogen- and stress-activated protein kinase 1 ribosomal protein S6 kinase, 90kD, polypeptide 5

Pathway

- [Bladder cancer](#)
- [MAPK signaling pathway](#)
- [Neurotrophin signaling pathway](#)

Disease

- [Genetic Predisposition to Disease](#)
- [Tobacco Use Disorder](#)

- [Urinary Bladder Neoplasms](#)