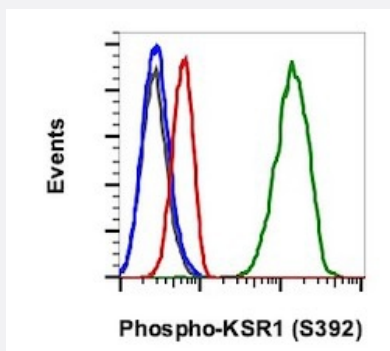


KSR1 (phospho S392) monoclonal antibody, clone 3A4 (PE)

Catalog # MAB23424 Size 100 Reactions

Applications



Flow Cytometry

Flow cytometric analysis of HeLa cells with KSR1 (phospho S392) monoclonal antibody, clone 3A4 (PE) (Cat # MAB23424). Untreated (green) or treated with phosphatase (red) or or concentration matched isotype control, for untreated cells (gray) or treated with phosphatase.

Specification

Product Description	Rabbit monoclonal antibody raised against synthetic phosphopeptide of human KSR1.
Immunogen	A synthetic phosphopeptide corresponding to residues surrounding S392 of human KSR1.
Host	Rabbit
Reactivity	Human, Mouse
Form	Liquid
Conjugation	PE
Purification	Protein A/G purification
Isotype	IgG1, kappa
Recommend Usage	Flow Cytometry (5 μ L/ 10^6 cells) The optimal working dilution should be determined by the end user.
Storage Buffer	In PBS, pH 7.4 (0.2% BSA, 0.09% sodium azide).
Storage Instruction	Store at 4°C.

Note

This product contains sodium azide: a POISONOUS AND HAZARDOUS SUBSTANCE which should be handled by trained staff only.

Applications

- Flow Cytometry

Flow cytometric analysis of HeLa cells with KSR1 (phospho S392) monoclonal antibody, clone 3A4 (PE) (Cat # MAB23424). Untreated (green) or treated with phosphatase (red) or concentration matched isotype control, for untreated cells (gray) or treated with phosphatase.

Gene Info — KSR1

Entrez GeneID	8844
Gene Name	KSR1
Gene Alias	KSR, RSU2
Gene Description	kinase suppressor of ras 1
Omim ID	601132
Gene Ontology	Hyperlink
Other Designations	kinase suppressor of ras

Disease

- [Tobacco Use Disorder](#)