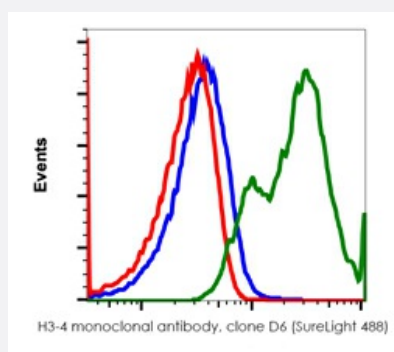


H3-4 (phospho S28) monoclonal antibody, clone D6 (SureLight 488)

Catalog # MAB23409 Size 100 Reactions

Applications



Flow Cytometry

Flow cytometric analysis of Hela cells with H3-4 (phospho Ser28) monoclonal antibody, clone D6 (SureLight 488)(Cat # MAB23409). Unstained untreated cells (blue) or untreated (red) or treated with nocodazole (green).

Specification

Product Description	Rabbit monoclonal antibody raised against synthetic phosphopeptide of human H3-4.
Immunogen	A synthetic phospho-peptide corresponding to residues surrounding Ser28 of human phospho Histone H3
Host	Rabbit
Reactivity	Human
Form	Liquid
Conjugation	SureLight 488
Isotype	IgG1, kappa
Recommend Usage	Flow Cytometry (5 uL/million cells) The optimal working dilution should be determined by the end user.
Storage Buffer	In PBS (0.09% NaN ₃ , 0.2% BSA)

Storage Instruction

Store at 4°C. Do not freeze.

Note

This product contains sodium azide: a POISONOUS AND HAZARDOUS SUBSTANCE which should be handled by trained staff only.

Applications

- Flow Cytometry

Flow cytometric analysis of Hela cells with H3-4 (phospho Ser28) monoclonal antibody, clone D6 (SureLight 488)(Cat # MAB23409). Unstained untreated cells (blue) or untreated (red) or treated with nocodazole (green).

Gene Info — HIST3H3

Entrez GeneID
[8290](#)
Protein Accession#
[Q16695](#)
Gene Name

HIST3H3

Gene Alias

H3.4, H3/g, H3FT, H3t, MGC126886, MGC126888

Gene Description

histone cluster 3, H3

Omim ID
[602820](#)
Gene Ontology
[Hyperlink](#)
Gene Summary

Histones are basic nuclear proteins that are responsible for the nucleosome structure of the chromosomal fiber in eukaryotes. Nucleosomes consist of approximately 146 bp of DNA wrapped around a histone octamer composed of pairs of each of the four core histones (H2A, H2B, H3, and H4). The chromatin fiber is further compacted through the interaction of a linker histone, H1, with the DNA between the nucleosomes to form higher order chromatin structures. This gene is intronless and encodes a member of the histone H3 family. Transcripts from this gene lack polyA tails; instead, they contain a palindromic termination element. This gene is located separately from the other H3 genes that are in the histone gene cluster on chromosome 6p22-p21.3. [provided by RefSeq]

Other Designations

H3 histone family, member T|OTTHUMP00000037945|histone 3, H3

Pathway

- [Systemic lupus erythematosus](#)