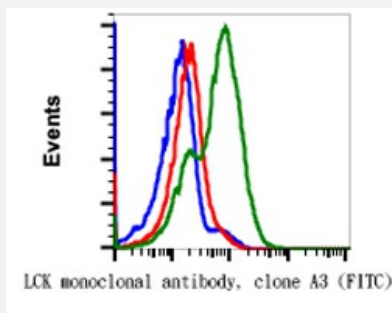


# LCK (phospho Y505) monoclonal antibody, clone A3 (FITC)

Catalog # MAB23368      Size 100 Reactions

## Applications



### Flow Cytometry

Flow cytometric analysis of Daudi Human Burkitt's lymphoma cells with LCK (phospho Tyr505) monoclonal antibody, clone A3 (FITC)(Cat # MAB23368). Untreated and unstained as negative control (blue) or untreated (red) or treated with IFNα +IL4 +PV and stained (green).

## Specification

<b>Product Description</b>	Rabbit monoclonal antibody raised against synthetic phosphopeptide of human LCK.
<b>Immunogen</b>	A synthetic phospho-peptide corresponding to residues surrounding Tyr505 of human phospho Lck
<b>Host</b>	Rabbit
<b>Reactivity</b>	Human
<b>Form</b>	Liquid
<b>Conjugation</b>	FITC
<b>Isotype</b>	IgG1, kappa
<b>Recommend Usage</b>	Flow Cytometry (5 uL/million cells) The optimal working dilution should be determined by the end user.
<b>Storage Buffer</b>	In PBS (0.09% NaN <sub>3</sub> , 0.2% BSA)
<b>Storage Instruction</b>	Store at 4°C. Do not freeze.
<b>Note</b>	This product contains sodium azide: a POISONOUS AND HAZARDOUS SUBSTANCE which should be handled by trained staff only.

## Applications

- Flow Cytometry

Flow cytometric analysis of Daudi Human Burkitt's lymphoma cells with LCK (phospho Tyr505) monoclonal antibody, clone A3 (FITC)(Cat # MAB23368). Untreated and unstained as negative control (blue) or untreated (red) or treated with IFN $\alpha$  +IL4 +PV and stained (green).

## Gene Info — LCK

Entrez GeneID	<a href="#">3932</a>
Protein Accession#	<a href="#">P06239</a>
Gene Name	LCK
Gene Alias	YT16, p56lck, pp58lck
Gene Description	lymphocyte-specific protein tyrosine kinase
Omim ID	<a href="#">153390</a>
Gene Ontology	<a href="#">Hyperlink</a>
Gene Summary	This gene is a member of the Src family of protein tyrosine kinases (PTKs). The encoded protein is a key signaling molecule in the selection and maturation of developing T-cells. It contains N-terminal sites for myristylation and palmitoylation, a PTK domain, and SH2 and SH3 domains which are involved in mediating protein-protein interactions with phosphotyrosine-containing and proline-rich motifs, respectively. The protein localizes to the plasma membrane and pericentrosomal vesicles, and binds to cell surface receptors, including CD4 and CD8, and other signaling molecules. Multiple alternatively spliced variants, encoding the same protein, have been described. [provided by RefSeq]
Other Designations	T-lymphocyte specific protein tyrosine kinase p56lck p56(LSTRA) protein-tyrosine kinase protein tyrosine kinase proto-oncogene tyrosine-protein kinase LCK

## Pathway

- [Natural killer cell mediated cytotoxicity](#)
- [Primary immunodeficiency](#)
- [T cell receptor signaling pathway](#)

## Disease

- [HIV Infections](#)
- [Tobacco Use Disorder](#)