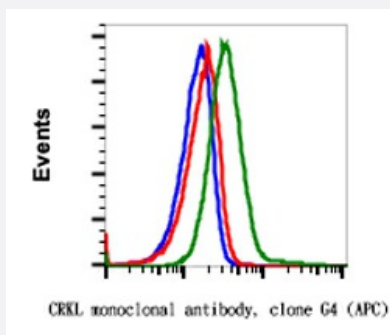


CRKL (phospho Y207) monoclonal antibody, clone G4 (APC)

Catalog # MAB23353 Size 100 Reactions

Applications



Flow Cytometry

Flow cytometric analysis of K562 cells with CRKL (phospho Tyr207) monoclonal antibody, clone G4 (APC)(Cat # MAB23353). Unstained (blue) as negative control or treated with imatinib (red) or treated with pervanadate (green).

Specification

Product Description	Rabbit monoclonal antibody raised against synthetic phosphopeptide of human CRKL.
Immunogen	A synthetic phospho-peptide corresponding to residues surrounding Tyr207 of human phospho CrkL
Host	Rabbit
Reactivity	Human
Form	Liquid
Conjugation	APC
Isotype	IgG1, kappa
Recommend Usage	Flow Cytometry (5 uL/million cells) The optimal working dilution should be determined by the end user.
Storage Buffer	In PBS (0.09% NaN ₃ , 0.2% BSA)
Storage Instruction	Store at 4°C. Do not freeze.

Note

This product contains sodium azide: a POISONOUS AND HAZARDOUS SUBSTANCE which should be handled by trained staff only.

Applications

- Flow Cytometry

Flow cytometric analysis of K562 cells with CRKL (phospho Tyr207) monoclonal antibody, clone G4 (APC)(Cat # MAB23353). Unstained (blue) as negative control or treated with imatinib (red) or treated with pervanadate (green).

Gene Info — CRKL

Entrez GeneID	1399
---------------	----------------------

Protein Accession#	P46109
--------------------	------------------------

Gene Name	CRKL
-----------	------

Gene Alias	-
------------	---

Gene Description	v-crk sarcoma virus CT10 oncogene homolog (avian)-like
------------------	--

Omim ID	602007
---------	------------------------

Gene Ontology	Hyperlink
---------------	---------------------------

Gene Summary	This gene encodes a protein kinase containing SH2 and SH3 (src homology) domains which has been shown to activate the RAS and JUN kinase signaling pathways and transform fibroblasts in a RAS-dependent fashion. It is a substrate of the BCR-ABL tyrosine kinase, plays a role in fibroblast transformation by BCR-ABL, and may be oncogenic
--------------	--

Other Designations	v-crk avian sarcoma virus CT10 oncogene homolog-like
--------------------	--

Pathway

- [Chemokine signaling pathway](#)
- [Chronic myeloid leukemia](#)
- [ErbB signaling pathway](#)
- [Fc gamma R-mediated phagocytosis](#)
- [Focal adhesion](#)

- [Insulin signaling pathway](#)
- [MAPK signaling pathway](#)
- [Neurotrophin signaling pathway](#)
- [Pathways in cancer](#)
- [Regulation of actin cytoskeleton](#)
- [Renal cell carcinoma](#)

Disease

- [Cardiovascular Diseases](#)
- [Diabetes Mellitus](#)
- [Edema](#)