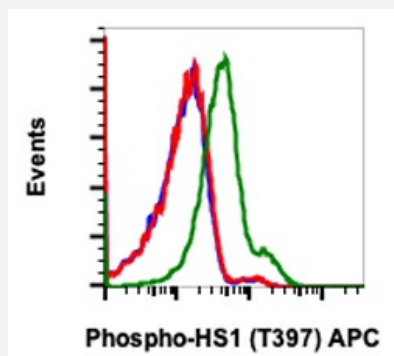


HCLS1 (phospho Tyr397) monoclonal antibody, clone F12 (APC)

Catalog # MAB23351

Size 100 Reactions

Applications



Flow Cytometry

Flow cytometric analysis of Ramos cells with HCLS1 monoclonal antibody, clone F12 (APC)(Cat # MAB23351). Unstained as negative control (blue) or untreated (red) or treated with pervanadate (green).

Specification

Product Description	Rabbit monoclonal antibody raised against synthetic peptide of human HCLS1.
Immunogen	A synthetic phospho-peptide corresponding to residues surrounding Tyr397 of human phospho HS1
Host	Rabbit
Reactivity	Human
Form	Liquid
Conjugation	APC
Recommend Usage	Flow Cytometry (5 uL/million cells) The optimal working dilution should be determined by the end user.
Storage Buffer	In PBS (0.09% NaN ₃ , 0.2% BSA)
Storage Instruction	Store at 4°C. Do not freeze.
Note	This product contains sodium azide: a POISONOUS AND HAZARDOUS SUBSTANCE which should be handled by trained staff only.

Applications

- Flow Cytometry

Flow cytometric analysis of Ramos cells with HCLS1 monoclonal antibody, clone F12 (APC)(Cat # MAB23351). Unstained as negative control (blue) or untreated (red) or treated with pervanadate (green).

Gene Info — HCLS1

Entrez GeneID	3059
Protein Accession#	P14317
Gene Name	HCLS1
Gene Alias	CTTNL, HS1
Gene Description	hematopoietic cell-specific Lyn substrate 1
Omim ID	601306
Gene Ontology	Hyperlink
Other Designations	cortactin-like

Pathway

- [Pathogenic Escherichia coli infection - EHEC](#)
- [Tight junction](#)

Disease

- [Kidney Failure](#)
- [Lupus Erythematosus](#)