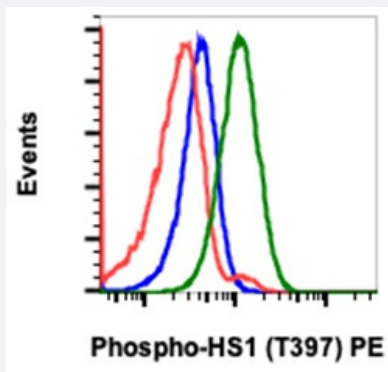


# HCLS1 (phospho Tyr397) monoclonal antibody, clone F12 (PE)

Catalog # MAB23350      Size 100 Reactions

## Applications



### Flow Cytometry

Flow cytometric analysis of Ramos cells with HCLS1 monoclonal antibody, clone F12 (PE)(Cat # MAB23350). Unstained as negative control (blue) or untreated (red) or treated with pervanadate (green).

## Specification

<b>Product Description</b>	Rabbit monoclonal antibody raised against synthetic peptide of human HCLS1.
<b>Immunogen</b>	A synthetic phospho-peptide corresponding to residues surrounding Tyr397 of human phospho HS1
<b>Host</b>	Rabbit
<b>Reactivity</b>	Human
<b>Form</b>	Liquid
<b>Conjugation</b>	PE
<b>Recommend Usage</b>	Flow Cytometry (5 uL/million cells) The optimal working dilution should be determined by the end user.
<b>Storage Buffer</b>	In PBS (0.09% NaN <sub>3</sub> , 0.2% BSA)
<b>Storage Instruction</b>	Store at 4°C. Do not freeze.
<b>Note</b>	This product contains sodium azide: a POISONOUS AND HAZARDOUS SUBSTANCE which should be handled by trained staff only.

## Applications

- Flow Cytometry

Flow cytometric analysis of Ramos cells with HCLS1 monoclonal antibody, clone F12 (PE)(Cat # MAB23350). Unstained as negative control (blue) or untreated (red) or treated with pervanadate (green).

## Gene Info — HCLS1

Entrez GeneID	<a href="#">3059</a>
Protein Accession#	<a href="#">P14317</a>
Gene Name	HCLS1
Gene Alias	CTTNL, HS1
Gene Description	hematopoietic cell-specific Lyn substrate 1
Omim ID	<a href="#">601306</a>
Gene Ontology	<a href="#">Hyperlink</a>
Other Designations	cortactin-like

## Pathway

- [Pathogenic Escherichia coli infection - EHEC](#)
- [Tight junction](#)

## Disease

- [Kidney Failure](#)
- [Lupus Erythematosus](#)