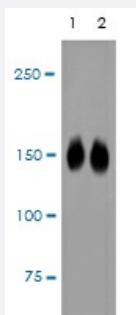


CRISPR-Cas9 monoclonal antibody, clone JM11-55

Catalog # MAB23325 Size 100 uL

Applications



Western Blot (Transfected lysate)

Western blot analysis of CRISPR-Cas9 monoclonal antibody, clone JM11-55 on 293 and 293T cells lysates transfected with CRISPR-Cas9 using anti-CRISPR-Cas9 SP antibody at 1/500 dilution.

Specification

Product Description	Rabbit monoclonal antibody raised against recombinant cas9 protein.
Host	Rabbit
Theoretical MW (kDa)	158
Reactivity	Streptococcus pyogenes
Form	Liquid
Purification	Protein A purification
Recommend Usage	CRISPR Genome editing Western Blot (1:1000 - 1:5000) The optimal working dilution should be determined by the end user.
Storage Buffer	In TBS, pH 7.4, 1%BSA, 40% Glycerol
Storage Instruction	Store at -20°C. Aliquot to avoid repeated freezing and thawing.
Note	This product contains sodium azide: a POISONOUS AND HAZARDOUS SUBSTANCE which should be handled by trained staff only.

Applications

- Western Blot (Transfected lysate)

Western blot analysis of CRISPR-Cas9 monoclonal antibody, clone JM11-55 on 293 and 293T cells lysates transfected with CRISPR-Cas9 using anti- CRISPR-Cas9 SP antibody at 1/500 dilution.

- CRISPR Genomic Editing

Gene Info — SPy_1046

Entrez GeneID	901176
---------------	------------------------

Protein Accession#	Q99ZW2
--------------------	------------------------

Gene Name	SPy_1046
-----------	----------

Gene Alias	-
------------	---

Gene Description	hypothetical protein
------------------	----------------------

Gene Ontology	Hyperlink
---------------	---------------------------

Other Designations	-
--------------------	---