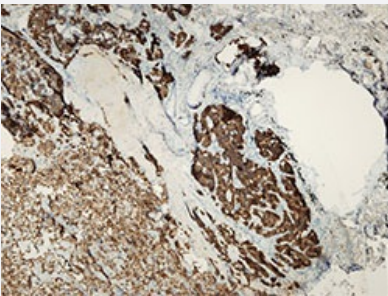


SYP monoclonal antibody, clone Q21-Q

Catalog # MAB23300

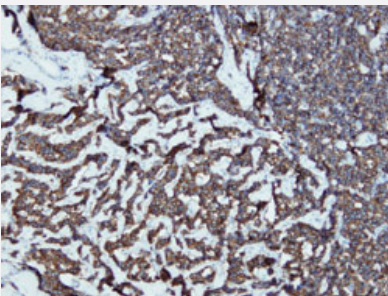
Size 7 mL

Applications



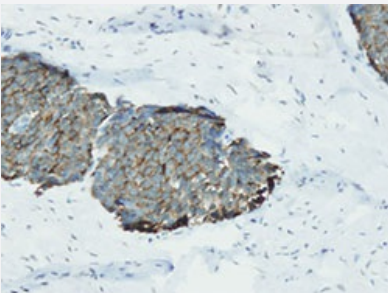
Immunohistochemistry (Formalin/PFA-fixed paraffin-embedded sections)

Immunohistochemical staining (Formalin-fixed paraffin-embedded sections) of human lung cancer with SYP monoclonal antibody, clone Q21-Q (Cat # MAB23300).



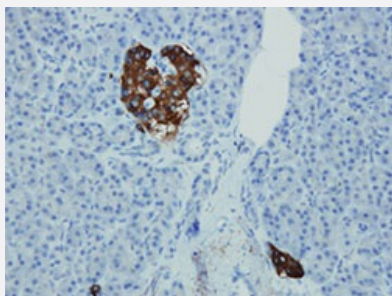
Immunohistochemistry (Formalin/PFA-fixed paraffin-embedded sections)

Immunohistochemical staining (Formalin-fixed paraffin-embedded sections) of human pancreatic cancer with SYP monoclonal antibody, clone Q21-Q (Cat # MAB23300).



Immunohistochemistry (Formalin/PFA-fixed paraffin-embedded sections)

Immunohistochemical staining (Formalin-fixed paraffin-embedded sections) of human small intestine neuroendocrine tumor with SYP monoclonal antibody, clone Q21-Q (Cat # MAB23300).



Immunohistochemistry (Formalin/PFA-fixed paraffin-embedded sections)

Immunohistochemical staining (Formalin-fixed paraffin-embedded sections) of human islet (islets of Langerhans) with SYP monoclonal antibody, clone Q21-Q (Cat # MAB23300).

Specification

Product Description	Rabbit monoclonal antibody raised against synthetic peptide of human SYP.
Immunogen	A synthetic peptide corresponding to C-terminus of human SYP.
Host	Rabbit
Reactivity	Human
Form	Liquid
Purification	immunoaffinity purification
Recommend Usage	Immunohistochemistry (1:100-1:200) The optimal working dilution should be determined by the end user.
Storage Buffer	In 20 mM Tris-HCl buffer, pH 8.0 (20 mg/mL BSA, 0.05% Sodium Azide).
Storage Instruction	Store at 4°C. Do not freeze.
Note	This product contains sodium azide: a POISONOUS AND HAZARDOUS SUBSTANCE which should be handled by trained staff only.

Applications

- Immunohistochemistry (Formalin/PFA-fixed paraffin-embedded sections)

Immunohistochemical staining (Formalin-fixed paraffin-embedded sections) of human lung cancer with SYP monoclonal antibody, clone Q21-Q (Cat # MAB23300).

- Immunohistochemistry (Formalin/PFA-fixed paraffin-embedded sections)

Immunohistochemical staining (Formalin-fixed paraffin-embedded sections) of human pancreatic cancer with SYP monoclonal antibody, clone Q21-Q (Cat # MAB23300).

- Immunohistochemistry (Formalin/PFA-fixed paraffin-embedded sections)

Immunohistochemical staining (Formalin-fixed paraffin-embedded sections) of human small intestine neuroendocrine tumor with SYP monoclonal antibody, clone Q21-Q (Cat # MAB23300).

- Immunohistochemistry (Formalin/PFA-fixed paraffin-embedded sections)

Immunohistochemical staining (Formalin-fixed paraffin-embedded sections) of human islet (islets of Langerhans) with SYP monoclonal antibody, clone Q21-Q (Cat # MAB23300).

Gene Info — SYP

Entrez GeneID [6855](#)

Protein Accession# [P08247](#)

Gene Name SYP

Gene Alias -

Gene Description synaptophysin

Omim ID [313475](#)

Gene Ontology [Hyperlink](#)

Gene Summary Synaptophysin (p38) is an integral membrane protein of small synaptic vesicles in brain and endocrine cells.[supplied by OMIM]

Other Designations major synaptic vesicle protein P38

Disease

- [Attention Deficit Disorder with Hyperactivity](#)
- [Genetic Predisposition to Disease](#)