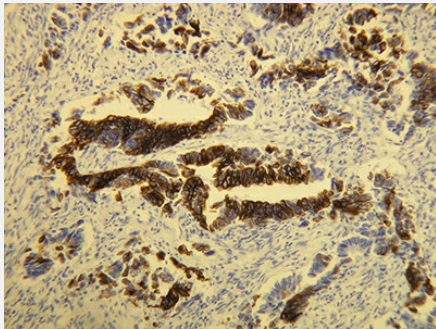


# KRT20 monoclonal antibody, clone E19-I

Catalog # MAB23294      Size 7 mL

## Applications



### Immunohistochemistry (Formalin/PFA-fixed paraffin-embedded sections)

Immunohistochemistry staining of Colorectal adenocarcinoma with KRT20 monoclonal antibody, clone E19-I (Cat # MAB23294)

## Specification

<b>Product Description</b>	Rabbit monoclonal antibody raised against synthetic peptide of human KRT20.
<b>Immunogen</b>	Synthetic peptide within C terminal sequence of human KRT20.
<b>Host</b>	Rabbit
<b>Reactivity</b>	Human
<b>Form</b>	Liquid
<b>Purification</b>	Immunoaffinity purification
<b>Recommend Usage</b>	Immunohistochemistry (1:100 - 1:200) The optimal working dilution should be determined by the end user.
<b>Storage Buffer</b>	In 20 mM Tris-HCl, pH 8.0
<b>Storage Instruction</b>	Store at 4°C. Do not freeze.
<b>Note</b>	This product contains sodium azide: a POISONOUS AND HAZARDOUS SUBSTANCE which should be handled by trained staff only.

## Applications

- Immunohistochemistry (Formalin/PFA-fixed paraffin-embedded sections)

Immunohistochemistry staining of Colorectal adenocarcinoma with KRT20 monoclonal antibody, clone E19-I (Cat # MAB23294)

## Gene Info — KRT20

**Entrez GeneID** [54474](#)

**Protein Accession#** [P35900](#)

**Gene Name** KRT20

**Gene Alias** CD20, CK20, K20, KRT21, MGC35423

**Gene Description** keratin 20

**Omim ID** [608218](#)

**Gene Ontology** [Hyperlink](#)

**Gene Summary** The protein encoded by this gene is a member of the keratin family. The keratins are intermediate filament proteins responsible for the structural integrity of epithelial cells and are subdivided into cytokeratins and hair keratins. The type I cytokeratins consist of acidic proteins which are arranged in pairs of heterotypic keratin chains. This cytokeratin is a major cellular protein of mature enterocytes and goblet cells and is specifically expressed in the gastric and intestinal mucosa. The type I cytokeratin genes are clustered in a region of chromosome 17q12-q21. [provided by RefSeq]

**Other Designations** cytokeratin 20|keratin, type I cytoskeletal 20

## Disease

- [Genetic Predisposition to Disease](#)
- [Growth Disorders](#)