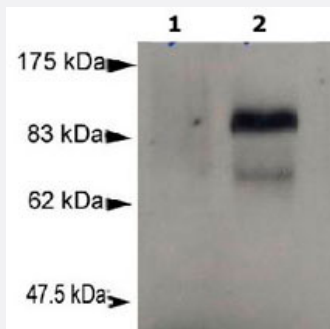


Prdm1 monoclonal antibody, clone 3H2-E8

Catalog # MAB2327 Size 100 uL

Applications

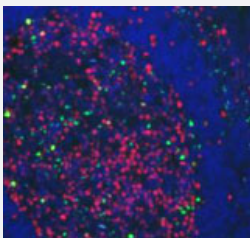


Western Blot (Cell lysate)

Detection of Prdm1 in murine plasmacytoma cell lysate (P3X) using Prdm1 monoclonal antibody, clone 3H2-E8 (Cat # MAB2327).

Murine pre-B cell lysate (negative control).

Photo courtesy of DA Savitsky, Columbia University.



Immunofluorescence

Double IF for Prdm1 (green) and Ki-67 (proliferation, red) with DAPI counterstain, at 10x magnification (scale bar is 10 um).

Positive surface epithelium and centrocytes are labelled.

Photo courtesy of Dr. Giorgio Cattoretti, Institute for Cancer Genetics, Columbia University, NY.

Specification

Product Description	Mouse monoclonal antibody raised against partial recombinant Prdm1.
Immunogen	Recombinant protein corresponding to amino acids 199-409 of mouse Prdm1.
Host	Mouse
Theoretical MW (kDa)	98, 80
Reactivity	Human, Mouse, Pig
Specificity	This antibody is specific to the Blimp-1. Recognizes a band ~98 KDa and may recognize one ~80 K Da (the beta form).

Form	Liquid
Isotype	IgG1
Recommend Usage	Flow Cytometry (8 ug/mL, 2*10 ⁶ /mL cells) Immunocytochemistry (1:50-1:100) Immunofluorescence (1:200) Immunohistochemistry (Formalin/PFA-fixed paraffin-embedded sections) (1:200) Western Blot (1:1000) The optimal working dilution should be determined by the end user.
Storage Buffer	In PBS (0.09% sodium azide)
Storage Instruction	Store at 4°C for short term. For long term storage store at -20°C. Aliquot to avoid repeated freezing and thawing.
Note	This product contains sodium azide: a POISONOUS AND HAZARDOUS SUBSTANCE which should be handled by trained staff only.

Applications

- Western Blot (Cell lysate)

Detection of Prdm1 in murine plasmacytoma cell lysate (P3X) using Prdm1 monoclonal antibody, clone 3H2-E8 (Cat # MAB2327).

Murine pre-B cell lysate (negative control).

Photo courtesy of DA Savitsky, Columbia University.

- Immunohistochemistry

- Immunocytochemistry

- Immunofluorescence

Double IF for Prdm1 (green) and Ki-67 (proliferation, red) with DAPI counterstain, at 10x magnification (scale bar is 10 um).

Positive surface epithelium and centrocytes are labelled.

Photo courtesy of Dr. Giorgio Cattoretti, Institute for Cancer Genetics, Columbia University, NY.

Gene Info — Prdm1

Entrez GeneID	12142
Gene Name	Prdm1
Gene Alias	Blimp-1, Blimp1, PRDI-BF1, ZNFPR1A1

Gene Description	PR domain containing 1, with ZNF domain
Gene Ontology	Hyperlink
Gene Summary	O
Other Designations	B lymphocyte induced maturation protein

Publication Reference

- [Blimp1 regulates development of the posterior forelimb, caudal pharyngeal arches, heart and sensory vibrissae in mice.](#)

Robertson EJ, Charatsi I, Joyner CJ, Koonce CH, Morgan M, Islam A, Paterson C, Lejsek E, Arnold SJ, Kallies A, Nutt SL, Bikoff EK.

Development 2007 Dec; 134(24):4335.

Application: IF, WB, Monkey, Mouse, COS cells, Mouse embryos

- [Cytokine-dependent Blimp-1 expression in activated T cells inhibits IL-2 production.](#)

Gong D, Malek TR.

Journal of Immunology 2007 Jan; 178(1):242.

Application: WB, Mouse , Mouse spleen cells, T cells

- [Toll-like receptor-dependent and -independent viperin gene expression and counter-regulation by PRDI-binding factor-1/BLIMP1.](#)

Severa M, Coccia EM, Fitzgerald KA.

The Journal of Biological Chemistry 2006 Sep; 281(36):26188.

Application: WB-Tr, Human, HEK 293T cells

- [PRDM1/Blimp-1 is expressed in human B-lymphocytes committed to the plasma cell lineage.](#)

Cattoretti G, Angelin-Duclos C, Shaknovich R, Zhou H, Wang D, Alobeid B.

The Journal of Pathology 2005 May; 206(1):76.

Application: IF, IHC-P, Human, Hodgkin's lymphoma, Human lymphomas

- [The dynamic expression pattern of B lymphocyte induced maturation protein-1 \(Blimp-1\) during mouse embryonic development.](#)

Chang DH, Cattoretti G, Calame KL.

Mechanisms of Development 2002 Sep; 117(1-2):305.

Application: IHC, Mouse, Embryos