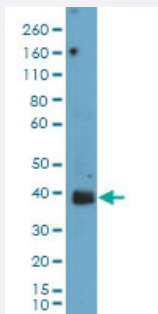


RecomAb™

# PDPN monoclonal antibody, clone RM449

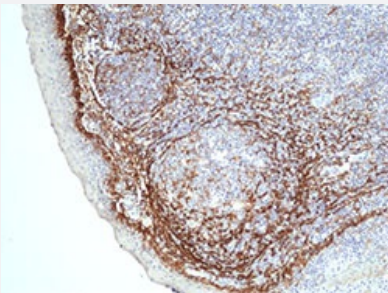
Catalog # MAB23234      Size 100 uL

## Applications



### Western Blot (Tissue lysate)

Western Blot (Tissue lysate) analysis of human prostate tissue lysates with PDPN monoclonal antibody, clone RM449 (Cat # MAB23234) at a 1:100 dilution.



### Immunohistochemistry (Formalin/PFA-fixed paraffin-embedded sections)

Immunohistochemical staining (Formalin-fixed paraffin-embedded sections) of human tonsil with PDPN monoclonal antibody, clone RM449 (Cat # MAB23234) at a 1:100 dilution.

## Specification

<b>Product Description</b>	Rabbit recombinant monoclonal antibody raised against human PDPN.
<b>Antibody Species</b>	Rabbit
<b>Immunogen</b>	Original antibody is raised against recombinant protein corresponding to human PDPN.
<b>Reactivity</b>	Human
<b>Specificity</b>	This antibody reacts to human PDPN.
<b>Form</b>	Liquid

Purification	Protein A purification
Isotype	IgG
Recommend Usage	Immunohistochemistry (1:100-1:200) Western Blot (1:100-1:500) The optimal working dilution should be determined by the end user.
Storage Buffer	In PBS (50% glycerol, 1% BSA, 0.09% sodium azide)
Storage Instruction	Store at -20°C. Aliquot to avoid repeated freezing and thawing.
Note	This product contains sodium azide: a POISONOUS AND HAZARDOUS SUBSTANCE which should be handled by trained staff only.

## Applications

- Western Blot (Tissue lysate)

Western Blot (Tissue lysate) analysis of human prostate tissue lysates with PDPN monoclonal antibody, clone RM449 (Cat # MAB23234) at a 1:100 dilution.

- Immunohistochemistry (Formalin/PFA-fixed paraffin-embedded sections)

Immunohistochemical staining (Formalin-fixed paraffin-embedded sections) of human tonsil with PDPN monoclonal antibody, clone RM449 (Cat # MAB23234) at a 1:100 dilution.

## Gene Info — PDPN

Entrez GeneID	<a href="#">10630</a>
Gene Name	PDPN
Gene Alias	AGGRUS, GP36, GP40, Gp38, HT1A-1, OTS8, PA2.26, T1A, T1A-2
Gene Description	podoplanin
Omim ID	<a href="#">608863</a>
Gene Ontology	<a href="#">Hyperlink</a>
Gene Summary	This gene encodes a type-I integral membrane glycoprotein with diverse distribution in human tissues. The physiological function of this protein may be related to its mucin-type character. The homologous protein in other species has been described as a differentiation antigen and influenza-virus receptor. The specific function of this protein has not been determined but it has been proposed as a marker of lung injury. Alternatively spliced transcript variants encoding different isoforms have been identified. [provided by RefSeq]

**Other Designations**

OTTHUMP00000009640|OTTHUMP00000044504|glycoprotein, 36-KD|hT1alpha-1|hT1alpha-2|lung type I cell membrane associated glycoprotein|lung type-I cell membrane-associated glycoprotein|lung type-I cell membrane-associated glycoprotein (T1A-2)

**Disease**

- [Genetic Predisposition to Disease](#)
- [Lymphedema](#)
- [Ovarian Neoplasms](#)
- [Tobacco Use Disorder](#)