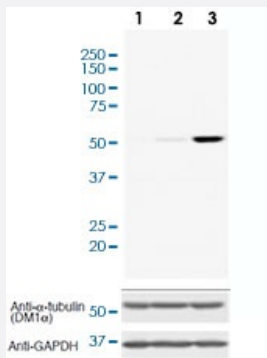


RecomAb™

# Detyrosinated alpha Tubulin monoclonal antibody, clone RM444

Catalog # MAB23229      Size 100 uL

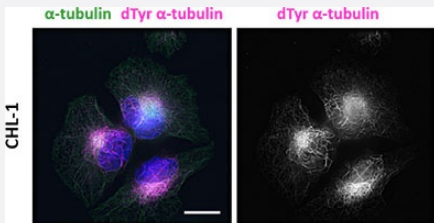
## Applications



### Western Blot (Cell lysate)

Western blot analysis of Lane 1:HeLa, Lane 2:U-2 OS, Lane 3:CHL-1 cell lysates with Detyrosinated alpha Tubulin monoclonal antibody, clone RM444 (Cat # MAB23229) at a 1:1000 dilution.

### Immunocytochemistry



Immunocytochemical staining of CHL-1 using Detyrosinated alpha Tubulin monoclonal antibody, clone RM444 (Cat # MAB23229) at a 1:200 dilution (pink), anti-alpha-Tubulin (green) antibody, and DAPI (blue). Bar: 20 um.

## Specification

<b>Product Description</b>	Rabbit recombinant monoclonal antibody raised against detyrosinated alpha-tubulin.
<b>Antibody Species</b>	Rabbit
<b>Immunogen</b>	Original antibody is raised against a synthetic peptide corresponding to detyrosinated alpha-tubulin.
<b>Reactivity</b>	Human
<b>Specificity</b>	This antibody reacts to Detyrosinated alpha Tubulin a PTM of $\alpha$ -tubulin where the C-terminal tyrosine residue has been cleaved.

Form	Liquid
Purification	Protein A purification
Isotype	IgG
Recommend Usage	Immunocytochemistry (1:100-1:200) Western Blot (1:1000-1:2000) The optimal working dilution should be determined by the end user.
Storage Buffer	In PBS (50% glycerol, 1% BSA, 0.09% sodium azide)
Storage Instruction	Store at -20°C. Aliquot to avoid repeated freezing and thawing.
Note	This product contains sodium azide: a POISONOUS AND HAZARDOUS SUBSTANCE which should be handled by trained staff only.

## Applications

- Western Blot (Cell lysate)

Western blot analysis of Lane 1:HeLa, Lane 2:U-2 OS, Lane 3:CHL-1 cell lysates with Detyrosinated alpha Tubulin monoclonal antibody, clone RM444 (Cat # MAB23229) at a 1:1000 dilution.

- Immunocytochemistry

Immunocytochemical staining of CHL-1 using Detyrosinated alpha Tubulin monoclonal antibody, clone RM444 (Cat # MAB23229) at a 1:200 dilution (pink), anti-alpha-Tubulin (green) antibody, and DAPI (blue). Bar: 20 um.