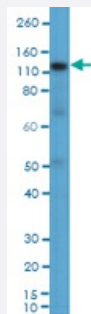


RecomAb™

# TNFRSF8 monoclonal antibody, clone RM425

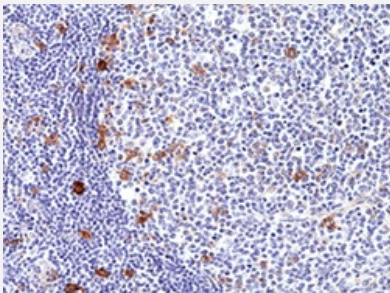
Catalog # MAB23212      Size 100 uL

## Applications



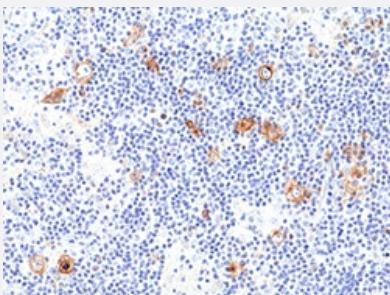
### Western Blot (Cell lysate)

Western Blot of K562 cell lysate using TNFRSF8 monoclonal antibody clone RM425 at a 1:1000 dilution.



### Immunohistochemistry (Formalin/PFA-fixed paraffin-embedded sections)

Immunohistochemical staining of formalin fixed and paraffin embedded human Hodgkin's lymphoma tissue section using TNFRSF8 monoclonal antibody clone RM425 at a 1:100 dilution.



### Immunohistochemistry (Formalin/PFA-fixed paraffin-embedded sections)

Immunohistochemical staining of formalin fixed and paraffin embedded human tonsil tissue section using TNFRSF8 monoclonal antibody clone RM425 at a 1:100 dilution.

## Specification

### Product Description

Rabbit recombinant monoclonal antibody raised against human TNFRSF8.

|                     |   |
|---------------------|---|
| Antibody Species    | Rabbit  |
| Immunogen           | Original antibody is raised against a synthetic peptide corresponding to the C-terminus of human TNFRSF8.                                   |
| Reactivity          | Human   |
| Specificity         | This antibody reacts to human TNFRSF8.  |
| Form                | Liquid  |
| Purification        | Protein A purification  |
| Isotype             | IgG   |
| Recommend Usage     | Immunocytochemistry (1:100 - 1:250)<br>Western Blot (1:1000 - 1:2500)<br>The optimal working dilution should be determined by the end user. |
| Storage Buffer      | In PBS (50% glycerol, 1% BSA, 0.09% sodium azide)   |
| Storage Instruction | Store at -20°C.<br>Aliquot to avoid repeated freezing and thawing.  |
| Note                | This product contains sodium azide: a POISONOUS AND HAZARDOUS SUBSTANCE which should be handled by trained staff only.                      |

## Applications

- Western Blot (Cell lysate)

Western Blot of K562 cell lysate using TNFRSF8 monoclonal antibody clone RM425 at a 1:1000 dilution.

- Immunohistochemistry (Formalin/PFA-fixed paraffin-embedded sections)

Immunohistochemical staining of formalin fixed and paraffin embedded human Hodgkin's lymphoma tissue section using TNFRSF8 monoclonal antibody clone RM425 at a 1:100 dilution.

- Immunohistochemistry (Formalin/PFA-fixed paraffin-embedded sections)

Immunohistochemical staining of formalin fixed and paraffin embedded human tonsil tissue section using TNFRSF8 monoclonal antibody clone RM425 at a 1:100 dilution.

## Gene Info — TNFRSF8

Entrez GeneID [943](#)

Gene Name TNFRSF8

|                    |  |
|--------------------|--|
| Gene Alias         | CD30, D1S166E, KI-1  |
| Gene Description   | tumor necrosis factor receptor superfamily, member 8   |
| Omim ID            | <a href="#">153243</a>   |
| Gene Ontology      | <a href="#">Hyperlink</a>  |
| Gene Summary       | <p>The protein encoded by this gene is a member of the TNF-receptor superfamily. This receptor is expressed by activated, but not by resting, T and B cells. TRAF2 and TRAF5 can interact with this receptor, and mediate the signal transduction that leads to the activation of NF-kappaB. This receptor is a positive regulator of apoptosis, and also has been shown to limit the proliferative potential of autoreactive CD8 effector T cells and protect the body against autoimmunity. Two alternatively spliced transcript variants of this gene encoding distinct isoforms have been reported. [provided by RefSeq]</p> |
| Other Designations | CD30 antigen CD30L receptor Ki-1 antigen OTTHUMP00000001783 cytokine receptor CD30 lymphocyte activation antigen CD30  |

## Pathway

- [Cytokine-cytokine receptor interaction](#)

## Disease

- [Asthma](#)
- [Diabetes Mellitus](#)
- [Genetic Predisposition to Disease](#)
- [Hematologic Diseases](#)
- [HIV Infections](#)
- [Kidney Failure](#)
- [Multiple Myeloma](#)
- [Occupational Diseases](#)
- [Tobacco Use Disorder](#)