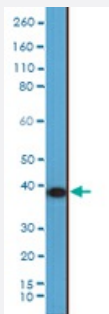


RecomAb™

ANXA1 monoclonal antibody, clone RM424

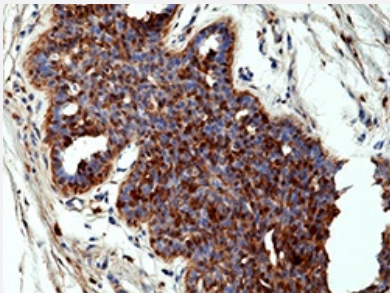
Catalog # MAB23211 Size 100 uL

Applications



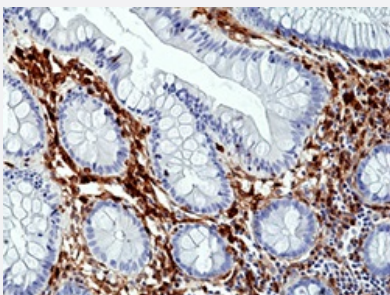
Western Blot (Cell lysate)

Western Blot of K562 cell lysate using ANXA1 monoclonal antibody clone RM424 at a 1:2000 dilution.



Immunohistochemistry (Formalin/PFA-fixed paraffin-embedded sections)

Immunohistochemical staining of formalin fixed and paraffin embedded human breast cancer tissue section using ANXA1 monoclonal antibody clone RM424 at a 1:100 dilution.



Immunohistochemistry (Formalin/PFA-fixed paraffin-embedded sections)

Immunohistochemical staining of formalin fixed and paraffin embedded human colon tissue section using ANXA1 monoclonal antibody clone RM424 at a 1:100 dilution.

Specification

Product Description

Rabbit recombinant monoclonal antibody raised against human ANXA1.

Antibody Species	Rabbit
Immunogen	Original antibody is raised against a synthetic peptide corresponding to the N-terminus of human ANXA1.
Reactivity	Human
Specificity	This antibody reacts to human ANXA1.
Form	Liquid
Purification	Protein A purification
Isotype	IgG
Recommend Usage	Immunocytochemistry (1:100 - 1:200) Western Blot (1:100 - 1:2000) The optimal working dilution should be determined by the end user.
Storage Buffer	In PBS (50% glycerol, 1% BSA, 0.09% sodium azide)
Storage Instruction	Store at -20°C. Aliquot to avoid repeated freezing and thawing.
Note	This product contains sodium azide: a POISONOUS AND HAZARDOUS SUBSTANCE which should be handled by trained staff only.

Applications

- Western Blot (Cell lysate)

Western Blot of K562 cell lysate using ANXA1 monoclonal antibody clone RM424 at a 1:2000 dilution.

- Immunohistochemistry (Formalin/PFA-fixed paraffin-embedded sections)

Immunohistochemical staining of formalin fixed and paraffin embedded human breast cancer tissue section using ANXA1 monoclonal antibody clone RM424 at a 1:100 dilution.

- Immunohistochemistry (Formalin/PFA-fixed paraffin-embedded sections)

Immunohistochemical staining of formalin fixed and paraffin embedded human colon tissue section using ANXA1 monoclonal antibody clone RM424 at a 1:100 dilution.

Gene Info — ANXA1

Entrez GeneID [301](#)

Gene Name ANXA1

Gene Alias	ANX1, LPC1
Gene Description	annexin A1
Omim ID	151690
Gene Ontology	Hyperlink
Gene Summary	<p>Annexin I belongs to a family of Ca(2+)-dependent phospholipid binding proteins which have a molecular weight of approximately 35,000 to 40,000 and are preferentially located on the cytosolic face of the plasma membrane. Annexin I protein has an apparent relative molecular mass of 40 kDa, with phospholipase A2 inhibitory activity. Since phospholipase A2 is required for the biosynthesis of the potent mediators of inflammation, prostaglandins and leukotrienes, annexin I may have potential anti-inflammatory activity. [provided by RefSeq]</p>
Other Designations	OTTHUMP00000021474 OTTHUMP00000021475 annexin I annexin I (lipocortin I) lipocortin I

Disease

- [Cardiovascular Diseases](#)
- [Diabetes Mellitus](#)
- [Edema](#)