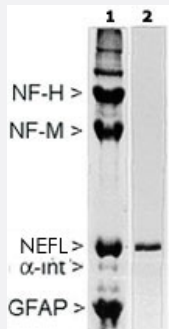


NEFL monoclonal antibody, clone DA2

Catalog # MAB2321 Size 50 uL

Applications



Western Blot (Tissue lysate)

Rat spinal cord homogenate showing the major intermediate filament proteins of the nervous system (lane 1). The lane shows blot of this material stained with NEFL monoclonal antibody, clone DA2 (Cat # MAB2321).

Specification

Product Description	Mouse monoclonal antibody raised against native NEFL.
Immunogen	Native purified pig NEFL.
Host	Mouse
Theoretical MW (kDa)	68
Reactivity	Birds, Human, Mammals
Specificity	Specifically recognizes the light neurofilament subunit or NF-L (~68 KDa).
Form	Liquid
Isotype	IgG1, kappa
Recommend Usage	Immunohistochemistry (1:250) Immunofluorescence (1:100-1:500) Western Blot (1:5000-1:10000) The optimal working dilution should be determined by the end user.
Storage Buffer	In buffer containing 0.09% sodium azide

Storage Instruction

Store at 4°C for short term. For long term storage store at -20°C.
Aliquot to avoid repeated freezing and thawing.

Note

This product contains sodium azide: a POISONOUS AND HAZARDOUS SUBSTANCE which should be handled by trained staff only.

Applications

- Western Blot (Tissue lysate)

Rat spinal cord homogenate showing the major intermediate filament proteins of the nervous system (lane 1). The lane shows blot of this material stained with NEFL monoclonal antibody, clone DA2 (Cat # MAB2321).

- Immunohistochemistry

- Immunofluorescence

Gene Info — LOC733642

Entrez GeneID[733642](#)**Gene Name**

LOC733642

Gene Alias

-

Gene Description

neurofilament light polypeptide

Gene Ontology[Hyperlink](#)**Other Designations**

-

Publication Reference

- [Preferential transformation of human neuronal cells by human adenoviruses and the origin of HEK 293 cells.](#)

Shaw G, Morse S, Ararat M, Graham FL.

FASEB Journal 2002 Apr; 16(8):869.

- [Identification of a tektin-like protein associated with neurofilaments in the developing chick nervous system.](#)

Edson KJ, Linck RW, Letourneau PC.

Journal of Neuroscience Research 1991 Sep; 30(1):105.

Application: IEM, IF, WB-Ti, Chicken, Chicken brain, Chicken spinal cord