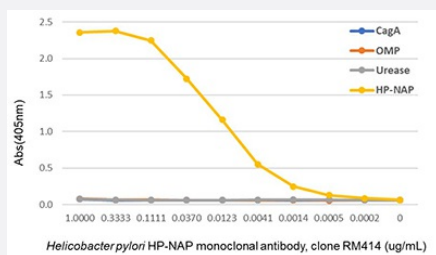


RecomAb™

Helicobacter pylori HP-NAP monoclonal antibody, clone RM414

Catalog # MAB23204 Size 100 ug

Applications



Enzyme-linked Immunoabsorbent Assay

An ELISA of *Helicobacter pylori* proteins using *Helicobacter pylori* HP-NAP monoclonal antibody clone RM414. The plate was coated with 1 ug/mL of CagA, OMP, Urease, or HP-NAP of *H. pylori*. A serial dilution of RM414 was used as the primary antibody. An alkaline phosphatase conjugated anti-rabbit IgG as the secondary antibody.

Specification

Product Description	Rabbit recombinant monoclonal antibody raised against <i>Helicobacter pylori</i> .
Antibody Species	Rabbit
Immunogen	Original antibody is raised against HP-NAP protein from <i>Helicobacter pylori</i> .
Reactivity	<i>Helicobacter pylori</i>
Specificity	This antibody reacts to the neutrophil-activating protein (HP-NAP) of <i>Helicobacter pylori</i> .
Form	Liquid
Purification	Protein A purification
Isotype	IgG
Recommend Usage	ELISA (0.01 ug/mL - 0.2 ug/mL) The optimal working dilution should be determined by the end user.
Storage Buffer	In PBS (50% glycerol, 1% BSA, 0.09% sodium azide)

Storage Instruction

Store at -20°C.
Aliquot to avoid repeated freezing and thawing.

Note

This product contains sodium azide: a POISONOUS AND HAZARDOUS SUBSTANCE which should be handled by trained staff only.

Applications

- Enzyme-linked Immunoabsorbent Assay

An ELISA of *Helicobacter pylori* proteins using *Helicobacter pylori* HP-NAP monoclonal antibody clone RM414. The plate was coated with 1 ug/mL of CagA, OMP, Urease, or HP-NAP of *H. pylori*. A serial dilution of RM414 was used as the primary antibody. An alkaline phosphatase conjugated anti-rabbit IgG as the secondary antibody.