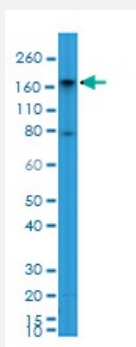


RecomAb™

# ANPEP monoclonal antibody, clone RM403

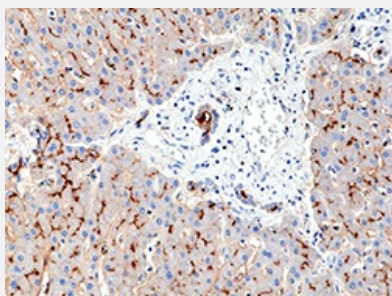
Catalog # MAB23193      Size 100 uL

## Applications



### Western Blot (Cell lysate)

Western Blot of HepG2 cells lysate using ANPEP monoclonal antibody clone RM403 at a 1:2000 dilution.



### Immunohistochemistry (Formalin/PFA-fixed paraffin-embedded sections)

Immunohistochemical staining of formalin fixed and paraffin embedded human liver section using ANPEP monoclonal antibody clone RM403 at a 1:200 dilution.

## Specification

Product Description	Rabbit recombinant monoclonal antibody raised against human ANPEP.
Antibody Species	Rabbit
Immunogen	Original antibody is raised against a synthetic peptide corresponding to C-terminus of human ANPEP.
Reactivity	Human
Specificity	This antibody reacts to human ANPEP.

Form	Liquid
Purification	Protein A purification
Isotype	IgG
Recommend Usage	Immunocytochemistry (1:100 - 1:200) Western Blot (1:1000 - 1:2000) The optimal working dilution should be determined by the end user.
Storage Buffer	In PBS (50% glycerol, 1% BSA, 0.09% sodium azide)
Storage Instruction	Store at -20°C. Aliquot to avoid repeated freezing and thawing.
Note	This product contains sodium azide: a POISONOUS AND HAZARDOUS SUBSTANCE which should be handled by trained staff only.

## Applications

- Western Blot (Cell lysate)

Western Blot of HepG2 cells lysate using ANPEP monoclonal antibody clone RM403 at a 1:2000 dilution.

- Immunohistochemistry (Formalin/PFA-fixed paraffin-embedded sections)

Immunohistochemical staining of formalin fixed and paraffin embedded human liver section using ANPEP monoclonal antibody clone RM403 at a 1:200 dilution.

## Gene Info — ANPEP

Entrez GeneID	<a href="#">290</a>
Gene Name	ANPEP
Gene Alias	APN, CD13, LAP1, PEPN, gp150, p150
Gene Description	alanyl (membrane) aminopeptidase
Omim ID	<a href="#">151530</a>
Gene Ontology	<a href="#">Hyperlink</a>

**Gene Summary**

Aminopeptidase N is located in the small-intestinal and renal microvillar membrane, and also in other plasma membranes. In the small intestine aminopeptidase N plays a role in the final digestion of peptides generated from hydrolysis of proteins by gastric and pancreatic proteases. Its function in proximal tubular epithelial cells and other cell types is less clear. The large extracellular carboxyterminal domain contains a pentapeptide consensus sequence characteristic of members of the zinc-binding metalloproteinase superfamily. Sequence comparisons with known enzymes of this class showed that CD13 and aminopeptidase N are identical. The latter enzyme was thought to be involved in the metabolism of regulatory peptides by diverse cell types, including small intestinal and renal tubular epithelial cells, macrophages, granulocytes, and synaptic membranes from the CNS. Human aminopeptidase N is a receptor for one strain of human coronavirus that is an important cause of upper respiratory tract infections. Defects in this gene appear to be a cause of various types of leukemia or lymphoma. [provided by RefSeq]

**Other Designations**

OTTHUMP00000194690|aminopeptidase M|aminopeptidase N|membrane alanine aminopeptidase|microsomal aminopeptidase

**Pathway**

- [Glutathione metabolism](#)
- [Hematopoietic cell lineage](#)
- [Metabolic pathways](#)
- [Renin-angiotensin system](#)

**Disease**

- [Genetic Predisposition to Disease](#)
- [Hypertension](#)
- [Lung Neoplasms](#)
- [Tobacco Use Disorder](#)