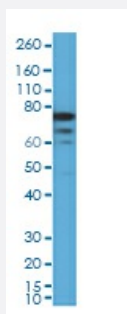


RecomAb™

FOXP1 monoclonal antibody, clone RM402

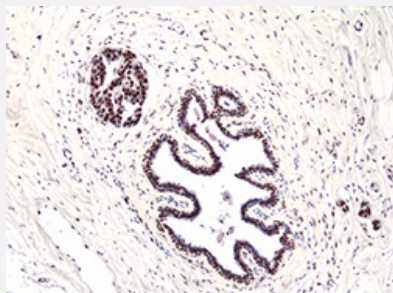
Catalog # MAB23192 Size 100 uL

Applications



Western Blot (Cell lysate)

Western Blot of 293 cell lysate using FOXP1 monoclonal antibody clone RM402 at a 1:1000 dilution.



Immunohistochemistry (Formalin/PFA-fixed paraffin-embedded sections)

Immunohistochemical staining of formalin fixed and paraffin embedded breast ductal carcinoma section using FOXP1 monoclonal antibody clone RM402 at a 1:200 dilution.

Specification

Product Description	Rabbit recombinant monoclonal antibody raised against human FOXP1.
Antibody Species	Rabbit
Immunogen	Original antibody is raised against a synthetic peptide corresponding to C-terminus of human FOXP1.
Reactivity	Human
Specificity	This antibody reacts to human FOXP1. This antibody may also react to mouse or rat Foxp1, as predicted by immunogen homology.

Form	Liquid
Purification	Protein A purification
Isotype	IgG
Recommend Usage	Immunocytochemistry (1:100 - 1:200) Western Blot (1:1000 - 1:2000) The optimal working dilution should be determined by the end user.
Storage Buffer	In PBS (50% glycerol, 1% BSA, 0.09% sodium azide)
Storage Instruction	Store at -20°C. Aliquot to avoid repeated freezing and thawing.
Note	This product contains sodium azide: a POISONOUS AND HAZARDOUS SUBSTANCE which should be handled by trained staff only.

Applications

- Western Blot (Cell lysate)

Western Blot of 293 cell lysate using FOXP1 monoclonal antibody clone RM402 at a 1:1000 dilution.

- Immunohistochemistry (Formalin/PFA-fixed paraffin-embedded sections)

Immunohistochemical staining of formalin fixed and paraffin embedded breast ductal carcinoma section using FOXP1 monoclonal antibody clone RM402 at a 1:200 dilution.

Gene Info — FOXP1

Entrez GeneID	27086
Gene Name	FOXP1
Gene Alias	12CC4, FLJ23741, HSPC215, MGC12942, MGC88572, MGC99551, QRF1, hFKH1B
Gene Description	forkhead box P1
Omim ID	605515
Gene Ontology	Hyperlink

Gene Summary

This gene belongs to subfamily P of the forkhead box (FOX) transcription factor family. Forkhead box transcription factors play important roles in the regulation of tissue- and cell type-specific gene transcription during both development and adulthood. Forkhead box P1 protein contains both DNA-binding- and protein-protein binding-domains. This gene may act as a tumor suppressor as it is lost in several tumor types and maps to a chromosomal region (3p14.1) reported to contain a tumor suppressor gene(s). Alternative splicing results in multiple transcript variants encoding different isoforms. [provided by RefSeq]

Other Designations

fork head-related protein like B|glutamine-rich factor 1

Disease

- [Apraxias](#)
- [Cardiovascular Diseases](#)
- [Developmental Disabilities](#)
- [Diabetes Mellitus](#)
- [Edema](#)
- [Genetic Predisposition to Disease](#)
- [Tobacco Use Disorder](#)
- [Vitiligo](#)