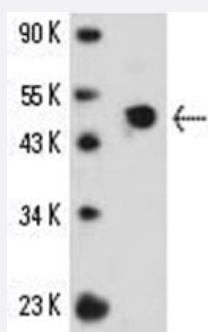


SAG monoclonal antibody, clone PDS-1

Catalog # MAB2318 Size 100 uL

Applications



Western Blot (Tissue lysate)

Western blot analysis of SAG monoclonal antibody, clone PDS-1 (Cat # MAB2318) in human retina tissue extract.

Specification

Product Description Mouse monoclonal antibody raised against SAG.

Immunogen Pig SAG.

Host Mouse

Reactivity Bovine, Human, Pig

Specificity This antibody is specific to arrestin protein.

Form Liquid

Isotype IgG1

Quality Control Testing Antibody Reactive Against Native Purified Protein.

Recommend Usage Immunohistochemistry (Frozen sections) (1:100)
The optimal working dilution should be determined by the end user.

Storage Buffer In Tris-glycine, 150 mM NaCl (0.05% sodium azide)

Storage Instruction Store at -20°C or -80°C.
Aliquot to avoid repeated freezing and thawing.

Note

This product contains sodium azide: a POISONOUS AND HAZARDOUS SUBSTANCE which should be handled by trained staff only.

Applications

- Western Blot (Tissue lysate)

Western blot analysis of SAG monoclonal antibody, clone PDS-1 (Cat # MAB2318) in human retina tissue extract.

- Immunohistochemistry (Frozen sections)

- Immunofluorescence

Gene Info — SAG

Entrez GeneID	397151
---------------	------------------------

Protein Accession#	P79260
--------------------	------------------------

Gene Name	SAG
-----------	-----

Gene Alias	-
------------	---

Gene Description	S-antigen
------------------	-----------

Gene Ontology	Hyperlink
---------------	---------------------------

Other Designations	-
--------------------	---

Publication Reference

- [Analysis of antigenic determinants of retinal S-antigen with monoclonal antibodies.](#)

Banga JP, LeRoy F, Suleyman S, Kasp E, Brown E, Dumonde D.

Investigative Ophthalmology & Visual Science 1988 Jan; 29(1):12.

Application: Func, IHC-P, WB-Re, Bovine, Human, Porcine, Rat , Peptide, Retina

- [Immunoreactive epitopes on human retinal S-antigen.](#)

Doekes G, de Geus JP, Banga JP, Forrester JV, Kijlstra A.

Ophthalmic Research 1988 Jan; 20(4):257.

Application: ELISA, Purified proteins