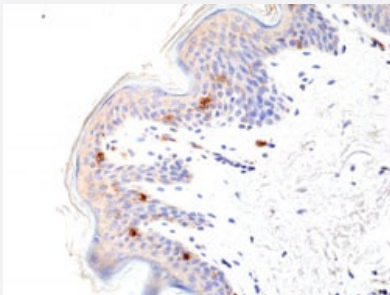


RecomAb™

## CD1A monoclonal antibody, clone RM393

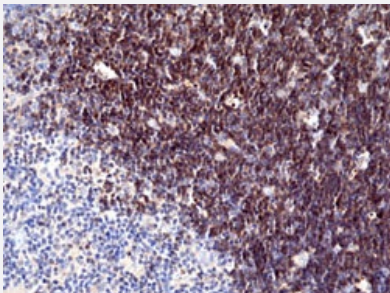
Catalog # MAB23173      Size 100 uL

### Applications



#### Immunohistochemistry (Formalin/PFA-fixed paraffin-embedded sections)

Immunohistochemical staining (Formalin-fixed paraffin-embedded sections) of human skin with CD1A monoclonal antibody, clone RM393 (Cat # MAB23173) at a 1:100 dilution.



#### Immunohistochemistry (Formalin/PFA-fixed paraffin-embedded sections)

Immunohistochemical staining (Formalin-fixed paraffin-embedded sections) of human thymus with CD1A monoclonal antibody, clone RM393 (Cat # MAB23173) at a 1:100 dilution.

### Specification

<b>Product Description</b>	Rabbit recombinant monoclonal antibody raised against human CD1A.
<b>Antibody Species</b>	Rabbit
<b>Immunogen</b>	Original antibody is raised against a synthetic peptide corresponding to N-terminus of human CD1A.
<b>Reactivity</b>	Human
<b>Specificity</b>	This antibody reacts to human T-cell surface glycoprotein CD1A.
<b>Form</b>	Liquid

Purification	Protein A purification
Isotype	IgG
Recommend Usage	Immunohistochemistry (1:100-1:200) The optimal working dilution should be determined by the end user.
Storage Buffer	In PBS (50% glycerol, 1% BSA, 0.09% sodium azide)
Storage Instruction	Store at -20°C. Aliquot to avoid repeated freezing and thawing.
Note	This product contains sodium azide: a POISONOUS AND HAZARDOUS SUBSTANCE which should be handled by trained staff only.

## Applications

- Immunohistochemistry (Formalin/PFA-fixed paraffin-embedded sections)

Immunohistochemical staining (Formalin-fixed paraffin-embedded sections) of human skin with CD1A monoclonal antibody, clone RM393 (Cat # MAB23173) at a 1:100 dilution.

- Immunohistochemistry (Formalin/PFA-fixed paraffin-embedded sections)

Immunohistochemical staining (Formalin-fixed paraffin-embedded sections) of human thymus with CD1A monoclonal antibody, clone RM393 (Cat # MAB23173) at a 1:100 dilution.

## Gene Info — CD1A

Entrez GeneID	<a href="#">909</a>
Gene Name	CD1A
Gene Alias	CD1, FCB6, HTA1, R4, T6
Gene Description	CD1a molecule
Omim ID	<a href="#">188370</a>
Gene Ontology	<a href="#">Hyperlink</a>

**Gene Summary**

This gene encodes a member of the CD1 family of transmembrane glycoproteins, which are structurally related to the major histocompatibility complex (MHC) proteins and form heterodimers with beta-2-microglobulin. The CD1 proteins mediate the presentation of primarily lipid and glycolipid antigens of self or microbial origin to T cells. The human genome contains five CD1 family genes organized in a cluster on chromosome 1. The CD1 family members are thought to differ in their cellular localization and specificity for particular lipid ligands. The protein encoded by this gene localizes to the plasma membrane and to recycling vesicles of the early endocytic system. Alternatively spliced transcript variants have been observed, but their biological validity has not been determined. [provided by RefSeq]

**Other Designations**

CD1A antigen|CD1A antigen, a polypeptide|OTTHUMP00000018907|T-cell surface antigen T6/L eu-6|T-cell surface glycoprotein CD1a|cluster of differentiation 1 A|cortical thymocyte antigen CD1 A|differentiation antigen CD1-alpha-3|epidermal dendritic cell marker

**Pathway**

- [Hematopoietic cell lineage](#)

**Disease**

- [Campylobacter Infections](#)
- [Genetic Predisposition to Disease](#)
- [Guillain-Barre Syndrome](#)
- [Lung Diseases](#)
- [Mycobacterium Infections](#)
- [Polyradiculoneuropathy](#)