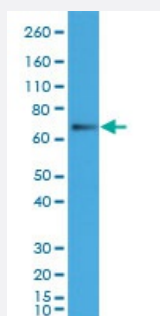


RecomAb™

TP63 monoclonal antibody, clone RM383

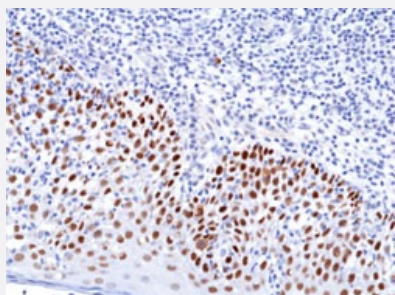
Catalog # MAB23165 Size 100 uL

Applications



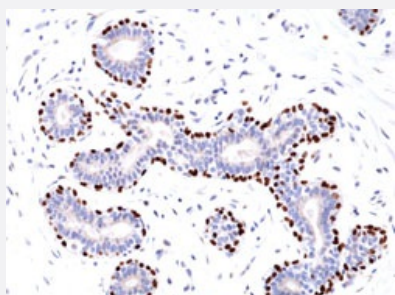
Western Blot (Cell lysate)

Western blot analysis of A-431 cell lysates with TP63 monoclonal antibody, clone RM383 (Cat # MAB23165) at a 1:1000 dilution.



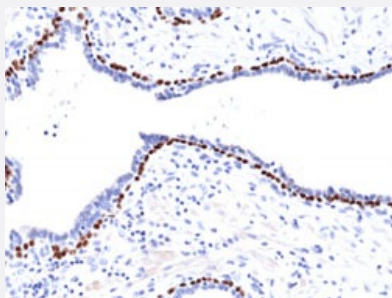
Immunohistochemistry (Formalin/PFA-fixed paraffin-embedded sections)

Immunohistochemical staining (Formalin-fixed paraffin-embedded sections) of human tonsil with TP63 monoclonal antibody, clone RM383 (Cat # MAB23165) at a 1:100 dilution.



Immunohistochemistry (Formalin/PFA-fixed paraffin-embedded sections)

Immunohistochemical staining (Formalin-fixed paraffin-embedded sections) of human breast with TP63 monoclonal antibody, clone RM383 (Cat # MAB23165) at a 1:100 dilution.



Immunohistochemistry (Formalin/PFA-fixed paraffin-embedded sections)

Immunohistochemical staining (Formalin-fixed paraffin-embedded sections) of human prostate with TP63 monoclonal antibody, clone RM383 (Cat # MAB23165) at a 1:100 dilution.

Specification

Product Description	Rabbit recombinant monoclonal antibody raised against human TP63.
Antibody Species	Rabbit
Immunogen	Original antibody is raised against a synthetic peptide corresponding to C-terminus of human TP63.
Reactivity	Human
Specificity	This antibody reacts to human TP63 (Tumor protein 63).
Form	Liquid
Purification	Protein A purification
Isotype	IgG
Recommend Usage	Immunohistochemistry (1:100-1:200) Western Blot (1:500-1:1000) The optimal working dilution should be determined by the end user.
Storage Buffer	In PBS (50% glycerol, 1% BSA, 0.09% sodium azide)
Storage Instruction	Store at -20°C. Aliquot to avoid repeated freezing and thawing.
Note	This product contains sodium azide: a POISONOUS AND HAZARDOUS SUBSTANCE which should be handled by trained staff only.

Applications

- Western Blot (Cell lysate)

Western blot analysis of A-431 cell lysates with TP63 monoclonal antibody, clone RM383 (Cat # MAB23165) at a 1:1000 dilution.

- Immunohistochemistry (Formalin/PFA-fixed paraffin-embedded sections)

Immunohistochemical staining (Formalin-fixed paraffin-embedded sections) of human tonsil with TP63 monoclonal antibody, clone RM383 (Cat # MAB23165) at a 1:100 dilution.

- Immunohistochemistry (Formalin/PFA-fixed paraffin-embedded sections)

Immunohistochemical staining (Formalin-fixed paraffin-embedded sections) of human breast with TP63 monoclonal antibody, clone RM383 (Cat # MAB23165) at a 1:100 dilution.

- Immunohistochemistry (Formalin/PFA-fixed paraffin-embedded sections)

Immunohistochemical staining (Formalin-fixed paraffin-embedded sections) of human prostate with TP63 monoclonal antibody, clone RM383 (Cat # MAB23165) at a 1:100 dilution.

Gene Info — TP63

Entrez GeneID [8626](#)

Gene Name TP63

Gene Alias AIS, B(p51A), B(p51B), EEC3, KET, LMS, NBP, OFC8, RHS, SHFM4, TP53CP, TP53L, TP73L, p40, p51, p53CP, p63, p73H, p73L

Gene Description tumor protein p63

Omim ID [103285](#) [106260](#) [129400](#) [603273](#) [603543](#) [604292](#) [605289](#)

Gene Ontology [Hyperlink](#)

Gene Summary This gene encodes a member of the p53 family of transcription factors. An animal model, p63 ^{-/-} mice, has been useful in defining the role this protein plays in the development and maintenance of stratified epithelial tissues. p63 ^{-/-} mice have several developmental defects which include the lack of limbs and other tissues, such as teeth and mammary glands, which develop as a result of interactions between mesenchyme and epithelium. Mutations in this gene are associated with ectodermal dysplasia, and cleft lip/palate syndrome 3 (EEC3); split-hand/foot malformation 4 (SHFM4); ankyloblepharon-ectodermal defects-cleft lip/palate; ADULT syndrome (acro-dermato-ungual-lacrima-tooth); limb-mammary syndrome; Rap-Hodgkin syndrome (RHS); and orofacial cleft 8. Both alternative splicing and the use of alternative promoters results in multiple transcript variants encoding different proteins. Many transcripts encoding different proteins have been reported but the biological validity and the full-length nature of these variants have not been determined. [provided by RefSeq]

Other Designations

amplified in squamous cell carcinoma|chronic ulcerative stomatitis protein|keratinocyte transcripti
on factor|transformation-related protein 63|tumor protein p53-competing protein|tumor protein p53
-like|tumor protein p73-like

Disease

- [Adenocarcinoma](#)
- [Alzheimer Disease](#)
- [Carcinoma](#)
- [Cleft Lip](#)
- [Cleft Palate](#)
- [Cognition Disorders](#)
- [Ectodermal Dysplasia](#)
- [Genetic Predisposition to Disease](#)
- [Lung Neoplasms](#)
- [Neoplasm Invasiveness](#)
- [Pulmonary Disease](#)
- [Syndrome](#)
- [Tobacco Use Disorder](#)
- [Urinary Bladder Neoplasms](#)
- [Werner syndrome](#)