

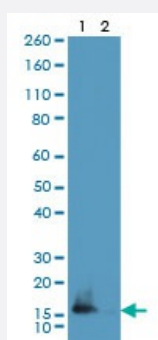
RecomAb™

# Histone H3 (dimethyl K9) and Histone H3 (acetyl K14) monoclonal antibody, clone RM322

Catalog # MAB23157

Size 100 ug

## Applications



### Western Blot

Western blot analysis of Lane 1: HeLa cells, Lane 2: recombinant histone H3.3 using Histone H3 (dimethyl K9) and Histone H3 (acetyl K14) monoclonal antibody, clone RM322 (Cat # MAB23157) under 0.5 ug/mL working concentration.

**This product contains sodium azide: a POISONOUS AND HAZARDOUS SUBSTANCE which should be handled by trained staff only.**

This product contains sodium azide: a POISONOUS AND HAZARDOUS SUBSTANCE which should be handled by trained staff only.

Histone H3 (dimethyl K9) and Histone H3 (acetyl K14) monoclonal antibody, clone RM322 (Cat# MAB23157) specifically reacts to Histone H3 only when modified at both dimethyl-lysine 9 and acetyl-lysine 14 (K9me2/K14ac). No cross reactivity with non- modified Lysine 9/14, methylated Lysine 9 (K9me1, k9me2, k9me3) ONLY, acetylated Lysine 9/14 ONLY, or methylated Lysine 14 (K14me2) ONLY, in Histone H3.

## Specification

### Product Description

Rabbit recombinant monoclonal antibody raised against human histone H3.

### Antibody Species

Rabbit

<b>Immunogen</b>	Original antibody is raised against a synthetic dimethyl peptide corresponding to residues surrounding Lys9 of human histone H3 and a synthetic acetyl peptide corresponding to residues surrounding Lys14 of human histone H3.
<b>Reactivity</b>	Human
<b>Specificity</b>	This antibody reacts to histone H3 only when modified by both methylation at lysine 9 and acetylation at lysine 14. No cross reactivity with monomethylated Lysine 9, dimethylated Lysine 9, trimethylated Lysine 9, or acetylated Lysine 9/14 only, in histone H3.
<b>Form</b>	Liquid
<b>Purification</b>	Protein A purification
<b>Isotype</b>	IgG
<b>Recommend Usage</b>	Western Blot (0.1 ug/mL-1 ug/mL) The optimal working dilution should be determined by the end user.
<b>Storage Buffer</b>	In PBS (50% glycerol, 1% BSA, 0.09% sodium azide)
<b>Storage Instruction</b>	Store at -20°C. Aliquot to avoid repeated freezing and thawing.
<b>Note</b>	<p>This product contains sodium azide: a POISONOUS AND HAZARDOUS SUBSTANCE which should be handled by trained staff only.</p> <p>This product contains sodium azide: a POISONOUS AND HAZARDOUS SUBSTANCE which should be handled by trained staff only.</p> <p>Histone H3 (dimethyl K9) and Histone H3 (acetyl K14) monoclonal antibody, clone RM322 (Cat# MAB23157) specifically reacts to Histone H3 only when modified at both dimethyl-lysine 9 and acetyl-lysine 14 (K9me2/K14ac). No cross reactivity with non-modified Lysine 9/14, methylated Lysine 9 (K9me1, K9me2, K9me3) ONLY, acetylated Lysine 9/14 ONLY, or methylated Lysine 14 (K14me2) ONLY, in Histone H3.</p>

## Applications

- Western Blot

Western blot analysis of Lane 1: HeLa cells, Lane 2: recombinant histone H3.3 using Histone H3 (dimethyl K9) and Histone H3 (acetyl K14) monoclonal antibody, clone RM322 (Cat # MAB23157) under 0.5 ug/mL working concentration.