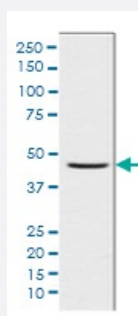


CCR8 monoclonal antibody, ACHG-3

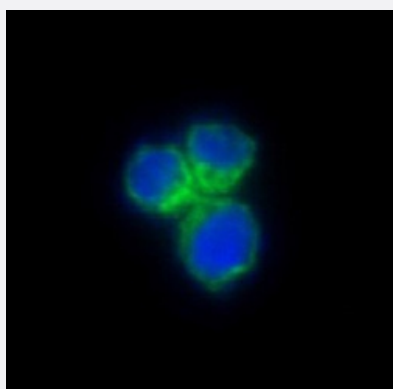
Catalog # MAB23152 Size 100 uL

Applications



Western Blot (Cell lysate)

Western blot analysis of CCR8 expression in Jurkat cell lysate.



Immunofluorescence

Immunofluorescent analysis of HeLa cells, using CCR8 Antibody (Cat # MAB23152).

Specification

Product Description	Rabbit monoclonal antibody raised against synthetic phosphopeptide of human CCR8.
Host	Rabbit
Reactivity	Human, Mouse, Rat
Form	Liquid
Purification	Affinity-chromatography

Recommend Usage	ICC/IF (1:50 - 1:200) Western Blot (1:500 - 1:1000)
Storage Buffer	In phosphate buffered saline, 150mM NaCl, pH 7.4 (0.4 - 0.5 mg/mL BSA, 0.02% sodium azide, 50 % glycerol).
Storage Instruction	Store at -20°C for one year. For short term storage and frequent use, store at 4°C for up to one month. Avoid repeated freeze-thaw cycles.
Note	This product contains sodium azide: a POISONOUS AND HAZARDOUS SUBSTANCE which should be handled by trained staff only.

Applications

- Western Blot (Cell lysate)

Western blot analysis of CCR8 expression in Jurkat cell lysate.

- Immunofluorescence

Immunofluorescent analysis of HeLa cells, using CCR8 Antibody (Cat # MAB23152).