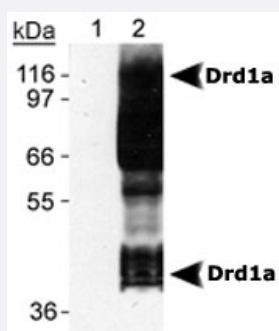


Drd1a monoclonal antibody, clone SG2-D1a

Catalog # MAB2314 Size 100 uL

Applications



Western Blot (Transfected lysate)

Detection of Drd1a of Sf9 cells transfected with rat Drd1a using Drd1a monoclonal antibody, clone SG2-D1a (Cat # MAB2314).

Lane 1 : Sf9-Drd5 lysate.

Lane 2 : Sf9-Drd1a lyate.

Please note that these results are similiar to those shown in J. Neuroimmunol. 101 : 170-187 publication.

Specification

Product Description	Mouse monoclonal antibody raised against partial recombinant Drd1a.
Immunogen	Recombinant protein corresponding to C-terminus of rat Drd1a.
Host	Mouse
Reactivity	Mouse, Rat
Specificity	This antibody reacts with Dopamine Receptor D1A. There is no cross- reactivity with D1B (D5) receptor.
Form	Liquid
Isotype	IgG2b, kappa
Quality Control Testing	Antibody Reactive Against Recombinant Protein.
Recommend Usage	The optimal working dilution should be determined by the end user.
Storage Buffer	In Tris-glycine, 150 mM NaCl (0.05% sodium azide)
Storage Instruction	Store at -20°C or -80°C. Aliquot to avoid repeated freezing and thawing.

Note

This product contains sodium azide: a POISONOUS AND HAZARDOUS SUBSTANCE which should be handled by trained staff only.

Applications

- Western Blot (Transfected lysate)

Detection of Drd1a of Sf9 cells transfected with rat Drd1a using Drd1a monoclonal antibody, clone SG2-D1a (Cat # MAB2314).

Lane 1 : Sf9-Drd5 lysate.

Lane 2 : Sf9-Drd1a lysate.

Please note that these results are similar to those shown in J. Neuroimmunol. 101 : 170-187 publication.

- Immunocytochemistry

- Immunofluorescence

Gene Info — Drd1a

Entrez GeneID [24316](#)

Protein Accession# [P18901](#)

Gene Name Drd1a

Gene Alias D1a, Drd-1, Drd1

Gene Description dopamine receptor D1A

Gene Ontology [Hyperlink](#)

Other Designations Dopamine-1A receptor|dopamine receptor 1A

Publication Reference

- [Production of monoclonal antibodies against GPCR using cell-free synthesized GPCR antigen and biotinylated liposome-based interaction assay.](#)

Takeda H, Ogasawara T, Ozawa T, Muraguchi A, Jih PJ, Morishita R, Uchigashima M, Watanabe M, Fujimoto T, Iwasaki T, Endo Y, Sawasaki T.

Scientific Reports 2015 Jun; 5:11333.

Application: IF, IP, WB, Mouse, Spleen cells were fused with SP2 myeloma cell line

- [Immunoblot and immunohistochemical comparison of murine monoclonal antibodies specific for the rat D1a and D1b dopamine receptor subtypes.](#)

Luedtke RR, Griffin SA, Conroy SS, Jin X, Pinto A, Sesack SR.

Journal of Neuroimmunology 1999 Nov; 101(2):170.

Application: IHC, WB-Ti, WB-Tr, Insect, Rat, Sf9 cells, Brain