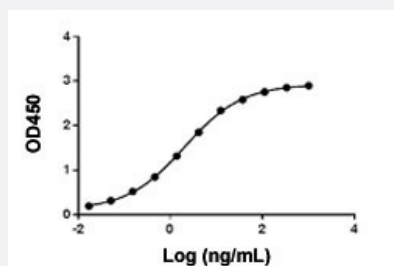


Anti-Obinutuzumab monoclonal antibody, clone 18H8

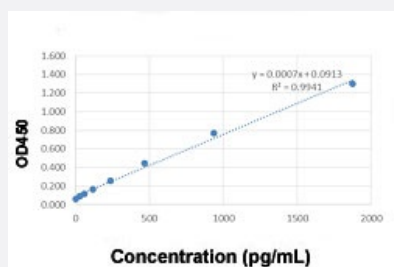
Catalog # MAB23131 Size 40 ug

Applications



Enzyme-linked Immunoabsorbent Assay

Anti-Obinutuzumab monoclonal antibody, clone 18H8 (Cat # MAB23131) binds with Obinutuzumab. Coating antigen: Obinutuzumab, 1 ug/mL. Anti-Obinutuzumab monoclonal antibody, clone 18H8 (Cat # MAB23131) dilution start from 1000 ng/mL. $EC_{50} = 2.013$ ng/mL. While the antibody does not recognize the human IgG Fc fragment (data not shown).



Sandwich ELISA

Standard curve of Obinutuzumab Sandwich ELISA. The Obinutuzumab Sandwich ELISA assay is developed by using Anti-Obinutuzumab monoclonal antibody, clone 18H8 (Cat # MAB23131) and Anti-Obinutuzumab monoclonal antibody, clone 16B7 (Biotin) (Cat # MAB23133) as the capture and detection antibodies, respectively. The sensitivity of detecting Obinutuzumab is about 30 pg/mL.

Specification

Product Description	Mouse monoclonal antibody raised against Obinutuzumab. Target gene is CD20.
Immunogen	Obinutuzumab.
Host	Mouse
Specificity	The product is specific for Obinutuzumab. The antibody is recommended as a capture antibody in a pharmacokinetic (PK) bridging assay with detection antibody Anti-Obinutuzumab monoclonal antibody, clone 16B7 (Biotin) (Cat # MAB23133).
Form	Lyophilized

Purification	Protein A purification
Isotype	IgG1, kappa
Recommend Usage	ELISA (ELISA detection: 0.005-1 ug/mL) (Direct/Indirect ELISA) Sandwich ELISA The optimal working dilution should be determined by the end user.
Inhibitory IC50	Non-inhibitory
Storage Buffer	Lyophilized from PBS, pH 7.4 (0.02% sodium azide).
Storage Instruction	Store at -20°C on dry atmosphere, lyophilized antibodies are stable at 1 years. After reconstitution with deionized water (or equivalent) to a final concentration of 0.5 mg/mL, it can be stored for 2-3 weeks at 2-8°C or for up to 12 months at -20°C or below. Aliquot to avoid repeated freezing and thawing.
Note	This product contains sodium azide: a POISONOUS AND HAZARDOUS SUBSTANCE which should be handled by trained staff only.

Applications

- Enzyme-linked Immunoabsorbent Assay

Anti-Obinutuzumab monoclonal antibody, clone 18H8 (Cat # MAB23131) binds with Obinutuzumab. Coating antigen: Obinutuzumab, 1 ug/mL. Anti-Obinutuzumab monoclonal antibody, clone 18H8 (Cat # MAB23131) dilution start from 1000 ng/mL. EC₅₀ = 2.013 ng/mL. While the antibody does not recognize the human IgG Fc fragment (data not shown).

- Sandwich ELISA

Standard curve of Obinutuzumab Sandwich ELISA. The Obinutuzumab Sandwich ELISA assay is developed by using Anti-Obinutuzumab monoclonal antibody, clone 18H8 (Cat # MAB23131) and Anti-Obinutuzumab monoclonal antibody, clone 16B7 (Biotin) (Cat # MAB23133) as the capture and detection antibodies, respectively. The sensitivity of detecting Obinutuzumab is about 30 pg/mL.

Gene Info — MS4A1

Entrez GeneID	931
Gene Name	MS4A1
Gene Alias	B1, Bp35, CD20, LEU-16, MGC3969, MS4A2, S7
Gene Description	membrane-spanning 4-domains, subfamily A, member 1
Omim ID	112210
Gene Ontology	Hyperlink

Gene Summary

This gene encodes a member of the membrane-spanning 4A gene family. Members of this nascent protein family are characterized by common structural features and similar intron/exon splice boundaries and display unique expression patterns among hematopoietic cells and nonlymphoid tissues. This gene encodes a B-lymphocyte surface molecule which plays a role in the development and differentiation of B-cells into plasma cells. This family member is localized to 11q12, among a cluster of family members. Alternative splicing of this gene results in two transcript variants which encode the same protein. [provided by RefSeq]

Other Designations

B-lymphocyte cell-surface antigen B1|CD20 antigen|CD20 receptor

Pathway

- [Hematopoietic cell lineage](#)

Disease

- [Breast cancer](#)
- [Breast Neoplasms](#)
- [Genetic Predisposition to Disease](#)
- [Lymphoma](#)
- [Neoplasm Recurrence](#)
- [Ovarian cancer](#)