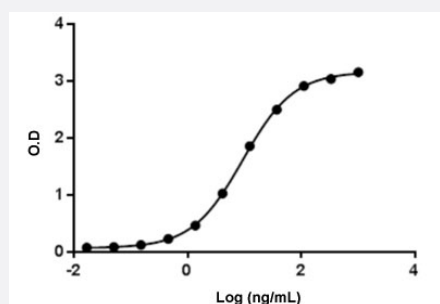


# Anti-Atezolizumab monoclonal antibody, clone 6B12

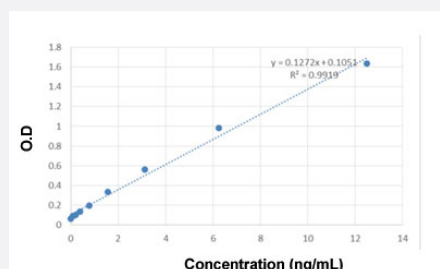
Catalog # MAB23120 Size 40 ug

## Applications



### Enzyme-linked Immunoabsorbent Assay

Anti-Atezolizumab monoclonal antibody, clone 6B12 (Cat # MAB23120) binds with Atezolizumab. Coating antigen: Atezolizumab, 1 ug/mL. Anti-Atezolizumab monoclonal antibody, clone 6B12 dilution start from 1000 ng/mL.  $EC_{50} = 9.356$  ng/mL. While the antibody does not recognize the human IgG Fc fragment (data not shown).



### Sandwich ELISA

The Sandwich ELISA assay is developed by using Anti-Atezolizumab monoclonal antibody, clone 10G9 (Cat # MAB23119) and Anti-Atezolizumab monoclonal antibody, clone 6B12 (Cat # MAB23120) as capture and detection antibody, respectively. In this ELISA assay, Anti-Atezolizumab monoclonal antibody, clone 6B12 was labeled with Biotin. The sensitivity of detecting Rituximab is about 97 pg/mL.

## Specification

<b>Product Description</b>	Mouse monoclonal antibody raised against Atezolizumab. Target gene is PD-L1.
<b>Immunogen</b>	Atezolizumab.
<b>Host</b>	Mouse
<b>Specificity</b>	The product is specific for Atezolizumab. The antibody is recommended as a detection antibody in a pharmacokinetic (PK) bridging assay with capture antibody Anti-Atezolizumab monoclonal antibody, clone 10G9 (Cat # <a href="#">MAB23119</a> ).
<b>Form</b>	Lyophilized

<b>Preparation Method</b>	This antibody is produced from a hybridoma resulting from the fusion of partner and B-lymphocytes obtained from a mouse immunized with Atezolizumab.
<b>Purification</b>	Protein A purification
<b>Isotype</b>	IgG1, kappa
<b>Recommend Usage</b>	ELISA (0.01-0.1 ug/mL (Direct/Indirect)) Sandwich ELISA The optimal working dilution should be determined by the end user.
<b>Inhibitory IC50</b>	Non-inhibitory
<b>Storage Buffer</b>	Lyophilized from PBS, pH 7.4 (0.02% sodium azide).
<b>Storage Instruction</b>	Store at -20°C on dry atmosphere. The lyophilized product remains stable up to 1 year at -20°C from date of receipt. After reconstitution with deionized water (or equivalent) to a final concentration of 0.5 mg/mL, it can be stored for 2-3 weeks at 2-8°C or for up to 12 months at -20°C or below. Aliquot to avoid repeated freezing and thawing.
<b>Note</b>	This product contains sodium azide: a POISONOUS AND HAZARDOUS SUBSTANCE which should be handled by trained staff only.

## Applications

- Enzyme-linked Immunoabsorbent Assay

Anti-Atezolizumab monoclonal antibody, clone 6B12 (Cat # MAB23120) binds with Atezolizumab. Coating antigen: Atezolizumab, 1 ug/mL. Anti-Atezolizumab monoclonal antibody, clone 6B12 dilution start from 1000 ng/mL.  $EC_{50} = 9.356$  ng/mL. While the antibody does not recognize the human IgG Fc fragment (data not shown).

- Sandwich ELISA

The Sandwich ELISA assay is developed by using Anti-Atezolizumab monoclonal antibody, clone 10G9 (Cat # MAB23119) and Anti-Atezolizumab monoclonal antibody, clone 6B12 (Cat # MAB23120) as capture and detection antibody, respectively. In this ELISA assay, Anti-Atezolizumab monoclonal antibody, clone 6B12 was labeled with Biotin. The sensitivity of detecting Rituximab is about 97 pg/mL.

## Gene Info — CD274

<b>Entrez GeneID</b>	<a href="#">29126</a>
<b>Gene Name</b>	CD274
<b>Gene Alias</b>	B7-H, B7H1, MGC142294, MGC142296, PD-L1, PDCD1L1, PDCD1LG1, PDL1
<b>Gene Description</b>	CD274 molecule

Omim ID [605402](#)

Gene Ontology [Hyperlink](#)

Other Designations CD274 antigen|OTTHUMP00000021029|programmed cell death 1 ligand 1

## Pathway

- [Cell adhesion molecules \(CAMs\)](#)

## Disease

- [Addison Disease](#)
- [Arthritis](#)
- [Autoimmune Diseases](#)
- [Diabetes Mellitus](#)
- [Genetic Predisposition to Disease](#)
- [Graves Disease](#)
- [Lupus Erythematosus](#)
- [Multiple Sclerosis](#)
- [Narcolepsy](#)
- [Rheumatoid Nodule](#)