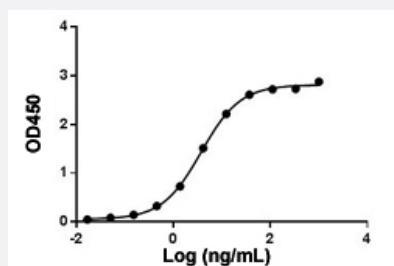


Anti-Atezolizumab monoclonal antibody, clone 43H11

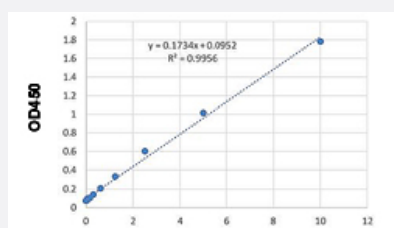
Catalog # MAB23080 Size 40 ug

Applications



Enzyme-linked Immunoabsorbent Assay

ELISA binding of Anti-Atezolizumab monoclonal antibody, clone 43H11 (Cat # MAB23080) with Atezolizumab. While the antibody does not recognize the human IgG Fc fragment (data not shown). Coating antigen: Atezolizumab, 1 ug/mL. Anti-Atezolizumab monoclonal antibody, clone 43H11 (Cat # MAB23080) dilutions start from 1000 ng/mL. EC₅₀ = 3.749 ng/mL.



Sandwich ELISA

Standard curve of Atezolizumab Sandwich ELISA. The Atezolizumab Sandwich ELISA assay is developed by using Anti-Atezolizumab monoclonal antibody, clone 55D8 (Cat # MAB23079) and Anti-Atezolizumab monoclonal antibody, clone 43H11 (Cat # MAB23080) as the capture and detection antibodies, respectively. In this ELISA assay, Anti-Atezolizumab monoclonal antibody, clone 43H11 (Cat # MAB23080) was labeled with Biotin. The sensitivity of detecting Atezolizumab is up to 156 pg/mL.

Specification

Product Description	Rabbit monoclonal antibody raised against Atezolizumab. Target gene is PD-L1.
Immunogen	Atezolizumab.
Host	Rabbit
Specificity	The antibody is recommended as detection antibody in a pharmacokinetic (PK) bridging assay with capture antibody Anti-Atezolizumab monoclonal antibody, clone 55D8 (Cat # MAB23079).
Form	Lyophilized

Preparation Method	This antibody is produced from a hybridoma resulting from the fusion of partner and B-lymphocytes obtained from a rabbit immunized with Atezolizumab.
Purification	Protein A purification
Isotype	IgG
Recommend Usage	ELISA (ELISA detection: 0.01-0.1 ug/mL) (Direct/Indirect ELISA) Sandwich ELISA The optimal working dilution should be determined by the end user.
Inhibitory IC50	0.847 ug/mL
Storage Buffer	Lyophilized from PBS, pH 7.4 (0.02% sodium azide).
Storage Instruction	Store at -20°C. The lyophilized product remains stable up to 1 year at -20°C from date of receipt. After reconstitution with deionized water (or equivalent) to a final concentration of 0.5 mg/mL, it can be stored for 2-3 weeks at 2-8°C or for up to 12 months at -20°C or below. Aliquot to avoid repeated freezing and thawing.
Note	This product contains sodium azide: a POISONOUS AND HAZARDOUS SUBSTANCE which should be handled by trained staff only.

Applications

- Enzyme-linked Immunoabsorbent Assay

ELISA binding of Anti-Atezolizumab monoclonal antibody, clone 43H11 (Cat # MAB23080) with Atezolizumab. While the antibody does not recognize the human IgG Fc fragment (data not shown). Coating antigen: Atezolizumab, 1 ug/mL. Anti-Atezolizumab monoclonal antibody, clone 43H11 (Cat # MAB23080) dilutions start from 1000 ng/mL. EC₅₀ = 3.749 ng/mL.

- Sandwich ELISA

Standard curve of Atezolizumab Sandwich ELISA. The Atezolizumab Sandwich ELISA assay is developed by using Anti-Atezolizumab monoclonal antibody, clone 55D8 (Cat # MAB23079) and Anti-Atezolizumab monoclonal antibody, clone 43H11 (Cat # MAB23080) as the capture and detection antibodies, respectively. In this ELISA assay, Anti-Atezolizumab monoclonal antibody, clone 43H11 (Cat # MAB23080) was labeled with Biotin. The sensitivity of detecting Atezolizumab is up to 156 pg/mL.

Gene Info — CD274

Entrez GeneID	29126
Gene Name	CD274
Gene Alias	B7-H, B7H1, MGC142294, MGC142296, PD-L1, PDCD1L1, PDCD1LG1, PDL1
Gene Description	CD274 molecule

Omim ID [605402](#)

Gene Ontology [Hyperlink](#)

Other Designations CD274 antigen|OTTHUMP00000021029|programmed cell death 1 ligand 1

Pathway

- [Cell adhesion molecules \(CAMs\)](#)

Disease

- [Addison Disease](#)
- [Arthritis](#)
- [Autoimmune Diseases](#)
- [Diabetes Mellitus](#)
- [Genetic Predisposition to Disease](#)
- [Graves Disease](#)
- [Lupus Erythematosus](#)
- [Multiple Sclerosis](#)
- [Narcolepsy](#)
- [Rheumatoid Nodule](#)