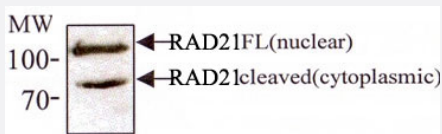


RAD21 monoclonal antibody, clone CM110-2C10

Catalog # MAB2300 Size 100 uL

Applications

Western Blot (Cell lysate)



Western blot analysis of RAD21 in 293 cell lysates with RAD21 monoclonal antibody, clone CM110-2C10 (Cat # MAB2300).

Specification

Product Description	Mouse monoclonal antibody raised against partial recombinant RAD21.
Immunogen	Recombinant protein corresponding to amino acids 544-631 of human RAD21.
Host	Mouse
Reactivity	Human, Mouse
Specificity	This antibody is specific to both the nuclear hRad21 protein and the cleaved cytoplasmic hRad21 protein.
Form	Liquid
Isotype	IgG1, kappa
Recommend Usage	Western Blot (1:500) The optimal working dilution should be determined by the end user.
Storage Buffer	In PBS (0.09% sodium azide)
Storage Instruction	Store at -20°C or -80°C. Aliquot to avoid repeated freezing and thawing.

Note

This product contains sodium azide: a POISONOUS AND HAZARDOUS SUBSTANCE which should be handled by trained staff only.

Applications

- Western Blot (Cell lysate)

Western blot analysis of RAD21 in 293 cell lysates with RAD21 monoclonal antibody, clone CM110-2C10 (Cat # MAB2300).

Gene Info — RAD21

Entrez GeneID [5885](#)

Gene Name RAD21

Gene Alias FLJ25655, FLJ40596, HR21, HRAD21, KIAA0078, MCD1, NXP1, SCC1, hHR21

Gene Description RAD21 homolog (S. pombe)

Omim ID [606462](#)

Gene Ontology [Hyperlink](#)

Gene Summary The protein encoded by this gene is highly similar to the gene product of Schizosaccharomyces pombe rad21, a gene involved in the repair of DNA double-strand breaks, as well as in chromatid cohesion during mitosis. This protein is a nuclear phospho-protein, which becomes hyperphosphorylated in cell cycle M phase. The highly regulated association of this protein with mitotic chromatin specifically at the centromere region suggests its role in sister chromatid cohesion in mitotic cells. [provided by RefSeq]

Other Designations RAD21 homolog|nuclear matrix protein 1|protein involved in DNA double-strand break repair

Publication Reference

- [Linking sister chromatid cohesion and apoptosis: role of Rad21.](#)

Pati D, Zhang N, Plon SE.

Molecular and Cellular Biology 2002 Dec; 22(23):8267.

Application: IF, IP-WB, WB-Ce, Human, Molt4, JEG3, MCF-7, ML-1, HL-60 cells

- [Human chromatid cohesin component hRad21 is phosphorylated in M phase and associated with metaphase centromeres.](#)

Hoque MT, Ishikawa F.

The Journal of Biological Chemistry 2001 Feb; 276(7):5059.

Application: IF, IP, WB, Human, HeLa cells

Pathway

- [Cell cycle](#)

Disease

- [Adenocarcinoma](#)
- [Fibrosis](#)
- [Genetic Predisposition to Disease](#)
- [Neoplasms](#)
- [Pancreatic Neoplasms](#)
- [Radiation Injuries](#)