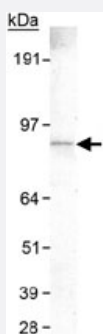


# SLC9A8 monoclonal antibody, clone 7A11

Catalog # MAB2292

Size 100 uL

## Applications



### Western Blot (Cell lysate)

Western blot analysis of SLC9A8 in HeLa whole cell lysate with SLC9A8 monoclonal antibody, clone 7A11 (Cat # MAB2292).

## Specification

<b>Product Description</b>	Mouse monoclonal antibody raised against partial recombinant SLC9A8.
<b>Immunogen</b>	Recombinant protein corresponding to C-terminus of human SLC9A8.
<b>Host</b>	Mouse
<b>Theoretical MW (kDa)</b>	85
<b>Reactivity</b>	Human
<b>Specificity</b>	This antibody is specific to the 85 KDa mature glycosylated form of the protein. It does not recognize the 55 KDa immature form.
<b>Form</b>	Liquid
<b>Isotype</b>	IgG
<b>Quality Control Testing</b>	Antibody Reactive Against Recombinant Protein.
<b>Recommend Usage</b>	Western Blot (2 ug/mL) The optimal working dilution should be determined by the end user.
<b>Storage Buffer</b>	In Tris-glycine, 150 mM NaCl (0.05% sodium azide)

**Storage Instruction**

Store at 4°C for short term. For long term storage store at -20°C.  
Aliquot to avoid repeated freezing and thawing.

**Note**

This product contains sodium azide: a POISONOUS AND HAZARDOUS SUBSTANCE which should be handled by trained staff only.

## Applications

- Western Blot (Cell lysate)

Western blot analysis of SLC9A8 in HeLa whole cell lysate with SLC9A8 monoclonal antibody, clone 7A11 (Cat # MAB2292).

## Gene Info — SLC9A8

**Entrez GeneID**[23315](#)**Protein Accession#**[Q9Y2E8](#)**Gene Name**

SLC9A8

**Gene Alias**

DKFZp686C03237, FLJ42500, KIAA0939, MGC138418, NHE8

**Gene Description**

solute carrier family 9 (sodium/hydrogen exchanger), member 8

**Gene Ontology**[Hyperlink](#)**Gene Summary**

Sodium-hydrogen exchangers (NHEs), such as SLC9A8, are integral transmembrane proteins that exchange extracellular Na<sup>+</sup> for intracellular H<sup>+</sup>. NHEs have multiple functions, including intracellular pH homeostasis, cell volume regulation, and electroneutral NaCl absorption in epithelia (Xu et al., 2008 [PubMed 18209477]).[supplied by OMIM]

**Other Designations**

OTTHUMP00000043368|sodium/hydrogen exchanger 8|solute carrier family 9 (sodium/hydrogen exchanger), isoform 8

## Publication Reference

- [Immunolocalization of NHE8 in rat kidney.](#)

Goyal S, Mentone S, Aronson PS.

American Journal of Physiology. Renal Physiology 2005 Mar; 288(3):F530.

Application: IF, WB-Ti, WB-Tr, Monkey, Mouse, Rat, COS-7 cells, Kidney