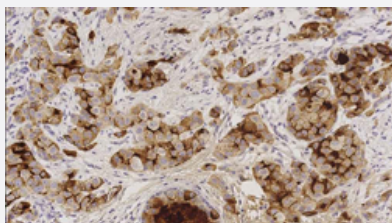


PIP monoclonal antibody, clone 23A3

Catalog # MAB22779

Size

Applications



Immunohistochemistry (Formalin/PFA-fixed paraffin-embedded sections)

Immunohistochemical staining (Formalin-fixed paraffin-embedded sections) of human invasive breast carcinoma. Note the cytoplasmic staining in tumor cells.

Specification

Product Description	Mouse monoclonal antibody raised against partial recombinant human PIP.
Immunogen	Recombinant protein corresponding to the excreted domain of the human PIP.
Host	Mouse
Reactivity	Human
Specificity	Human gross cystic disease fluid protein (15 kD).
Form	Liquid
Isotype	IgG2a
Recommend Usage	Immunohistochemistry (Formalin/PFA-fixed paraffin-embedded sections) (1:40 for 30 minutes at 25°C) The optimal working dilution should be determined by the end user.
Storage Buffer	In tissue culture supernatant (0.09% sodium azide).
Storage Instruction	Store at 4°C. Do not freeze. Return to 2-8°C immediately after use. Do not use after expiration date indicated on the vial label.

Note

This product contains sodium azide: a POISONOUS AND HAZARDOUS SUBSTANCE which should be handled by trained staff only.

Recommended positive control tissue is skin - sweat glands.

Recommended negative control tissue is tonsil.

Applications

- Immunohistochemistry (Formalin/PFA-fixed paraffin-embedded sections)

Immunohistochemical staining (Formalin-fixed paraffin-embedded sections) of human invasive breast carcinoma. Note the cytoplasmic staining in tumor cells.

Gene Info — PIP

Entrez GeneID	5304
Gene Name	PIP
Gene Alias	GCDFP-15, GCDFP15, GPIP4
Gene Description	prolactin-induced protein
Omim ID	176720
Gene Ontology	Hyperlink
Other Designations	prolactin-inducible protein

Disease

- [Genetic Predisposition to Disease](#)
- [Rhinitis](#)