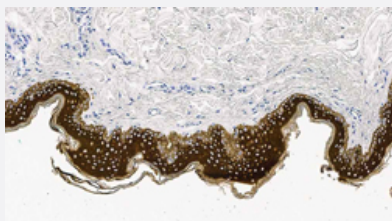


Cytokeratin 5/6/18 monoclonal antibody, clone LP34

Catalog # MAB22777

Size

Applications



Immunohistochemistry

Immunohistochemical staining of human skin: localized throughout the epidermis, with the strongest staining in the stratum spinosum. There is an absence of staining in the dermis.

Specification

Product Description	Mouse monoclonal antibody raised against human cytokeratin 5, 6 and 18.
Immunogen	Detergent-insoluble fraction of psoriatic human epidermis.
Host	Mouse
Reactivity	Human
Specificity	Human cytokeratin 5, 6 and 18 intermediate filament proteins.
Form	Liquid
Isotype	IgG1
Recommend Usage	<p>Immunohistochemistry (On paraffin sections. Enzyme Induced Epitope Retrieval (EIER)) (1:100 for 30 minutes at 25°C)</p> <p>The optimal working dilution should be determined by the end user.</p> <p>This antibody reacts with human cytokeratin intermediate filament proteins 5, 6 and 18 on frozen tissue. The staining of cytokeratin 18 may be variable on some formalin-fixed, paraffin-embedded tissue sections with this antibody.</p>
Storage Buffer	In tissue culture supernatant (0.09% sodium azide).

Storage Instruction

Store at 4°C. Do not freeze. Return to 2-8°C immediately after use. Do not use after expiration date indicated on the vial label.

Note

This product contains sodium azide: a POISONOUS AND HAZARDOUS SUBSTANCE which should be handled by trained staff only.
Recommended positive control for immunohistochemistry is skin.

Applications

- Immunohistochemistry

Immunohistochemical staining of human skin: localized throughout the epidermis, with the strongest staining in the stratum spinosum. There is an absence of staining in the dermis.