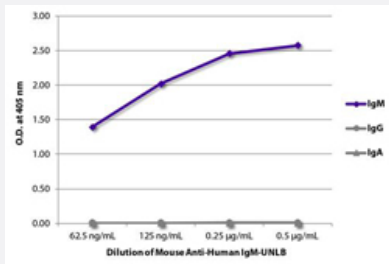


Mouse Anti-Human IgM secondary antibody, clone UHB

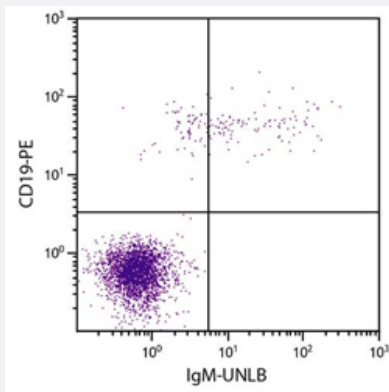
Catalog # MAB22768 Size 500 ug

Applications



Enzyme-linked Immunoabsorbent Assay

ELISA plate was coated with purified human IgM, IgG, and IgA. Immunoglobulins were detected with serially diluted Mouse Anti-Human IgM secondary antibody, clone UHB (Cat # MAB22768) followed by Goat Anti-Mouse IgG3, Human ads-HRP.



Flow Cytometry

Human peripheral blood lymphocytes were stained with Mouse Anti-Human IgM secondary antibody, clone UHB (Cat # MAB22768) and Mouse Anti-Human CD19-PE followed by Goat Anti-Mouse IgG3, Human ads-FITC.

Specification

Product Description	Mouse monoclonal antibody raised against human IgM.
Immunogen	Unknown.
Host	Mouse
Reactivity	Human
Specificity	Human IgM.
Form	Liquid

Conjugation	Unconjugated
Isotype	IgG3, kappa
Recommend Usage	ELISA Flow Cytometry ($\leq 1 \text{ ug}/10^6$ cells. The suggested use of this reagent is in a final volume of 100 μL) The optimal working dilution should be determined by the end user.
Storage Buffer	In borate buffered saline, pH 8.2.
Storage Instruction	Store at 4°C.

Applications

- Enzyme-linked Immunoabsorbent Assay

ELISA plate was coated with purified human IgM, IgG, and IgA. Immunoglobulins were detected with serially diluted Mouse Anti-Human IgM secondary antibody, clone UHB (Cat # MAB22768) followed by Goat Anti-Mouse IgG3, Human ads-HRP.

- Flow Cytometry

Human peripheral blood lymphocytes were stained with Mouse Anti-Human IgM secondary antibody, clone UHB (Cat # MAB22768) and Mouse Anti-Human CD19-PE followed by Goat Anti-Mouse IgG3, Human ads-FITC.

Gene Info — IGHM

Entrez GeneID	3507
Protein Accession#	P01871
Gene Name	IGHM
Gene Alias	DKFZp686i15196, DKFZp686i15212, FLJ00385, MGC104996, MGC52291, MU, VH
Gene Description	immunoglobulin heavy constant mu
Omim ID	147020 601495
Gene Ontology	Hyperlink
Other Designations	-

Disease

- [Genetic Predisposition to Disease](#)

- [Lupus Erythematosus](#)