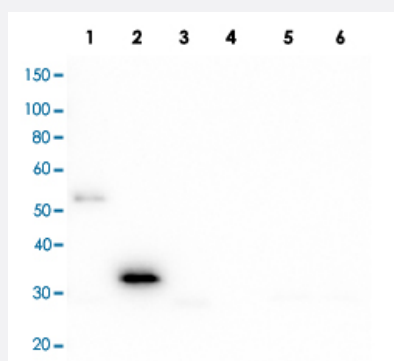


Mouse Anti-Human IgG F(c) secondary antibody, clone 3D8.H7.D4

Catalog # MAB22760

Size 100 ug

Applications



Western Blot

Western Blot analysis of Lane 1: human IgG, Lane 2: human Fc, Lane 3: human Fab, Lane 4: human Fab2, Lane 5: human IgM, and Lane 6: human IgM Fc5mu. Load: 50 ng per lane. Primary antibody: at 1:1000 for overnight at 4°C. Secondary antibody: HRP mouse secondary antibody at 1:40,000 for 30 min at RT. Block: for 30 min at RT. Predicted MW: ~28 kDa. Observed MW: ~33 kDa for human Fc.

Specification

Product Description	Mouse monoclonal antibody raised against human IgG F(c) fragment.
Immunogen	Human IgG F(c) fragment.
Host	Mouse
Reactivity	Human
Specificity	IgG F(c). Assay by immunoelectrophoresis resulted in a single precipitin arc against anti-mouse serum, human IgG, human serum and human F(c). No reaction was observed against human F(ab).
Form	Liquid
Conjugation	Unconjugated
Purification	This antibody was prepared from concentrated roller bottle supernatant by Protein A chromatography sepharose beads.
Isotype	IgG1, kappa

Recommend Usage	ELISA (1:1000-1:10000) Western Blot (1:1000-1:2000) The optimal working dilution should be determined by the end user.
Storage Buffer	In 0.02 M potassium phosphate, 0.15 M sodium chloride, pH 7.2 (0.01% (w/v) sodium azide).
Storage Instruction	Store vial at -20°C prior to opening. For long term storage, aliquot contents and freeze at -20°C or below. Aliquot to avoid repeated freezing and thawing. Centrifuge product if not completely clear after standing at room temperature. This product is stable for several weeks at 4°C as an undiluted liquid. Dilute only prior to immediate use.
Note	This product contains sodium azide: a POISONOUS AND HAZARDOUS SUBSTANCE which should be handled by trained staff only.

Applications

- Western Blot

Western Blot analysis of Lane 1: human IgG, Lane 2: human Fc, Lane 3: human Fab, Lane 4: human Fab2, Lane 5: human IgM, and Lane 6: human IgM Fc5mu. Load: 50 ng per lane. Primary antibody: at 1:1000 for overnight at 4°C. Secondary antibody: HRP mouse secondary antibody at 1:40,000 for 30 min at RT. Block: for 30 min at RT. Predicted MW: ~28 kDa. Observed MW: ~33 kDa for human Fc.

- Enzyme-linked Immunoabsorbent Assay