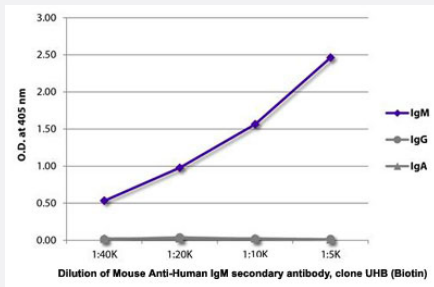


Mouse Anti-Human IgM secondary antibody, clone UHB (Biotin)

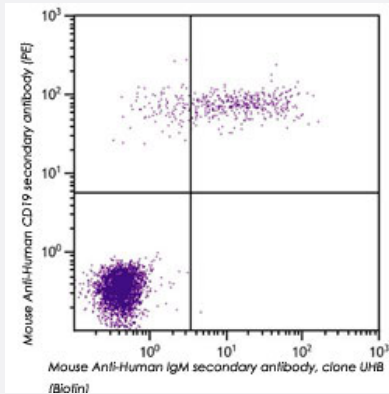
Catalog # MAB22719 Size 500 ug

Applications



Enzyme-linked Immunoabsorbent Assay

ELISA plate was coated with purified human IgM, IgG, and IgA. Immunoglobulins were detected with serially diluted Mouse Anti-Human IgM secondary antibody, clone UHB (Biotin).



Flow Cytometry

Flow cytometric analysis of human peripheral blood lymphocytes were stained with Mouse Anti-Human IgM secondary antibody, clone UHB (Biotin) (Cat # MAB22719) and Mouse Anti-Human CD19 secondary antibody (PE) followed by Streptavidin-FITC.

Specification

Product Description	Mouse monoclonal antibody raised against human IgM.
Immunogen	Purified human IgM.
Host	Mouse
Theoretical MW (kDa)	900
Reactivity	Human
Specificity	The antibody reacts with human IgM.

Form	Liquid
Conjugation	Biotin
Purification	Precipitation and/or chromatography
Purity	>= 90% purity by HPLC and/or SDS-PAGE
Isotype	IgG3, kappa
Recommend Usage	ELISA (1:5000-1:10000) Flow Cytometry (<= 1 ug/10 ⁶ cells): suggested use of the reagent is in a final volume of 100 uL The optimal working dilution should be determined by the end user.
Storage Buffer	In PBS (0.09% sodium azide).
Storage Instruction	Store at 4°C.
Note	This product contains sodium azide: a POISONOUS AND HAZARDOUS SUBSTANCE which should be handled by trained staff only.

Applications

- Enzyme-linked Immunoabsorbent Assay

ELISA plate was coated with purified human IgM, IgG, and IgA. Immunoglobulins were detected with serially diluted Mouse Anti-Human IgM secondary antibody, clone UHB (Biotin).

- Flow Cytometry

Flow cytometric analysis of human peripheral blood lymphocytes were stained with Mouse Anti-Human IgM secondary antibody, clone UHB (Biotin) (Cat # MAB22719) and Mouse Anti-Human CD19 secondary antibody (PE) followed by Streptavidin-FITC.

Gene Info — IGHM

Entrez GeneID	3507
Protein Accession#	P01871
Gene Name	IGHM
Gene Alias	DKFZp686I15196, DKFZp686I15212, FLJ00385, MGC104996, MGC52291, MU, VH
Gene Description	immunoglobulin heavy constant mu
Omim ID	147020 601495

Gene Ontology

[Hyperlink](#)

Other Designations

-

Disease

- [Genetic Predisposition to Disease](#)
- [Lupus Erythematosus](#)