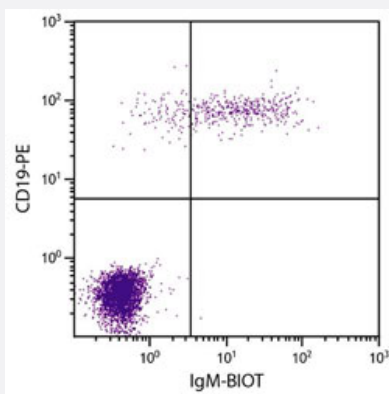


Mouse Anti-Human (kappa chain) secondary antibody, clone SB81a (FITC)

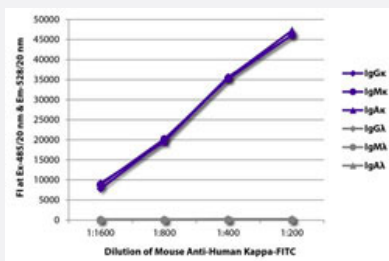
Catalog # MAB22604 Size 500 ug

Applications



Flow Cytometry

Flow cytometric analysis of CD19+ human B-lymphocytes were stained with Mouse Anti-Human (kappa chain) secondary antibody, clone SB81a (FITC).



Fluorescence-linked Immunosorbent Assay

FLISA plate was coated with purified human IgG kappa, IgM kappa, IgA kappa, IgG lamda, IgM lamda, and IgA lamda. Immunoglobulins were detected with serially diluted Mouse Anti-Human (kappa chain) secondary antibody, clone SB81a (FITC).

Specification

Product Description	Mouse monoclonal antibody raised against human kappa light chain.
Immunogen	Human kappa light chain.
Host	Mouse
Reactivity	Human
Specificity	Human Kappa.

Form	Liquid
Conjugation	FITC
Purification	Precipitation method and/or chromatography purification
Isotype	IgG1, kappa
Recommend Usage	ELISA (1:200-400) Flow Cytometry ($\leq 1 \text{ ug}/10^6$ cells) The optimal working dilution should be determined by the end user.
Storage Buffer	In PBS (0.09% sodium azide).
Storage Instruction	Store in the dark at 4°C. Avoid prolonged exposure to light.
Note	This product contains sodium azide: a POISONOUS AND HAZARDOUS SUBSTANCE which should be handled by trained staff only.

Applications

- Flow Cytometry

Flow cytometric analysis of CD19+ human B-lymphocytes were stained with Mouse Anti-Human (kappa chain) secondary antibody, clone SB81a (FITC).

- Fluorescence-linked Immunosorbent Assay

FLISA plate was coated with purified human IgG kappa, IgM kappa, IgA kappa, IgG lamda, IgM lamda, and IgA lamda. Immunoglobulins were detected with serially diluted Mouse Anti-Human (kappa chain) secondary antibody, clone SB81a (FITC).

Gene Info — IGKC

Entrez GeneID	3514
Protein Accession#	P01834
Gene Name	IGKC
Gene Alias	HCAK1, Km, MGC111575, MGC62011, MGC72072, MGC88770, MGC88771, MGC88809
Gene Description	immunoglobulin kappa constant
Omim ID	147200
Gene Ontology	Hyperlink

Other Designations

-

Disease

- [Dermatomyositis](#)
- [Genetic Predisposition to Disease](#)
- [Helicobacter Infections](#)
- [Polymyositis](#)
- [Purpura](#)
- [Sarcoidosis](#)