

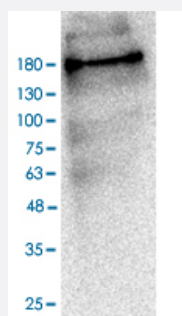
SARS-CoV-2

SARS-CoV-2 S monoclonal antibody, clone LGSV201

Catalog # MAB22570

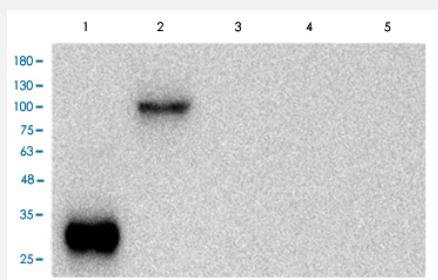
Size 100 ug

Applications



Western Blot (Transfected lysate)

Western Blot analysis of 293T cells were transfected with SARS-CoV-2 VLP (Virus-like particle) were stained with SARS-CoV-2 S monoclonal antibody, clone LGSV201 (Cat # MAB22570) at 1:5000 dilution.

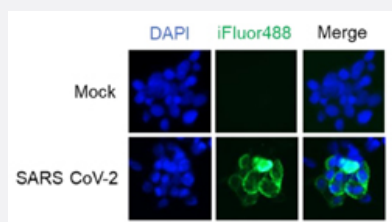


Western Blot (Recombinant protein)

Western Blot analysis of different recombinant proteins were stained with SARS-CoV-2 S monoclonal antibody, clone LGSV201 (Cat # MAB22570) at 1:5000 dilution. Lane 1: SARS-CoV-2 S1-RBD, Lane 2: SARS-CoV-2 S1, Lane 3: SARS-CoV S1-RBD, Lane 4: SARS-CoV S1, and Lane 5: MERS-CoV S1-RBD.

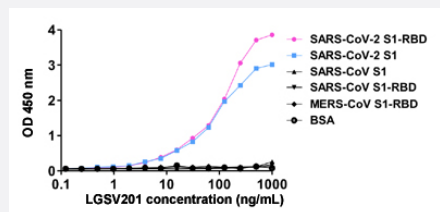
Immunofluorescence

Immunofluorescent staining of 293T cells were transfected with SARS CoV-2 spike plasmid and stained with SARS-CoV-2 S monoclonal antibody, clone LGSV201 (Cat # MAB22570) (1:1000).



Enzyme-linked Immunoabsorbent Assay

ELISA assay of SARS-CoV-2 S monoclonal antibody, clone LGSV201 (Cat # MAB22570) to SARS-CoV-2 S1-RBD, SARS-CoV-2 S1, SARS-CoV S1, SARS-CoV S1-RBD, MERS-CoV S1-RBD and BSA (BSA: negative control).



Specification

Product Description	Mouse monoclonal antibody raised against SARS-CoV-2 S.
Immunogen	SARS-CoV-2 VLP (Virus-like particle).
Host	Mouse
Reactivity	SARS-CoV-2
Form	Liquid
Purification	Protein A purification
Purity	> 98% (SDS-PAGE).
Isotype	IgG1, kappa
Recommend Usage	ELISA (1:5000-1:20000) Flow Cytometry Immunofluorescence(1:500-1:1000) Western Blot (1:1000-1:5000) The optimal working dilution should be determined by the end user.
Storage Buffer	In PBS, pH 7.4.
Storage Instruction	Store at 4°C for at least 6 months. For long term storage, store at -20°C. Aliquot to avoid repeated freezing and thawing.
Note	This monoclonal antibody is derived from SARS-CoV-2 VLP immune mouse.

Applications

- Western Blot (Transfected lysate)

Western Blot analysis of 293T cells were transfected with SARS-CoV-2 VLP (Virus-like particle) were stained with SARS-CoV-2 S monoclonal antibody, clone LGSV201 (Cat # MAB22570) at 1:5000 dilution.

- Western Blot (Recombinant protein)

Western Blot analysis of different recombinant proteins were stained with SARS-CoV-2 S monoclonal antibody, clone LGSV201 (Cat # MAB22570) at 1:5000 dilution. Lane 1: SARS-CoV-2 S1-RBD, Lane 2: SARS-CoV-2 S1, Lane 3: SARS-CoV S1-RBD, Lane 4: SARS-CoV S1, and Lane 5: MERS-CoV S1-RBD.

- Immunofluorescence

Immunofluorescent staining of 293T cells were transfected with SARS CoV-2 spike plasmid and stained with SARS-CoV-2 S monoclonal antibody, clone LGSV201 (Cat # MAB22570) (1:1000).

- Enzyme-linked Immunoabsorbent Assay

ELISA assay of SARS-CoV-2 S monoclonal antibody, clone LGSV201 (Cat # MAB22570) to SARS-CoV-2 S1-RBD, SARS-CoV-2 S1, SARS-CoV S1, SARS-CoV S1-RBD, MERS-CoV S1-RBD and BSA (BSA: negative control).

- Flow Cytometry

Publication Reference

- [Efficient Inactivation of SARS-CoV-2 and Other RNA or DNA Viruses with Blue LED Light.](#)

Chiara Terrosi, Gabriele Anichini, Jean Denis Docquier, Gianni Gori Savellini, Claudia Gandolfo, Francesco Saverio Pavone, Maria Grazia Cusi.

Pathogens 2021 Dec; 10(12):1590.

Application: WB, Virus, SARS-CoV-2 spike protein