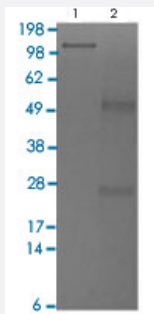


SARS-CoV-2

SARS-CoV-2 S2 monoclonal antibody, clone S2

Catalog # MAB22420 Size 100 ug

Applications



Under non-reducing SDS-PAGE conditions, the SARS-CoV-2 S2 monoclonal antibody, clone S2 migrates as a 150 KDa protein (Lane 1). Under DTT-reducing conditions it migrates as 50 KDa and 25 KDa polypeptides (Lane 2).

Specification

| | |
|--------------------------------|--|
| Product Description | Human monoclonal antibody raised against recombinant SARS-CoV-2 S2. |
| Immunogen | Recombinant protein corresponding to SARS-CoV-2 S2. |
| Host | Human |
| Reactivity | SARS-CoV-2 |
| Form | Liquid |
| Purification | Protein A purification |
| Isotype | IgG1 |
| Quality Control Testing | Under non-reducing and DTT-reducing SDS-PAGE conditions Under non-reducing SDS-PAGE conditions, the SARS-CoV-2 S2 monoclonal antibody, clone S2 migrates as a 150 KDa protein (Lane 1). Under DTT-reducing conditions it migrates as 50 KDa and 25 KDa polypeptides (Lane 2). |
| Recommend Usage | ELISA (1:1000-1:5000) SDS-PAGE The optimal working dilution should be determined by the end user. |
| Storage Buffer | In PBS, pH 7.2. |

Storage Instruction

Store at 4°C for short term. For long term storage store at -20°C.
Aliquot to avoid repeated freezing and thawing.

Applications

- Enzyme-linked Immunoabsorbent Assay
- SDS-PAGE