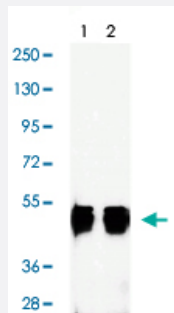


SARS-CoV N monoclonal antibody, clone 3861

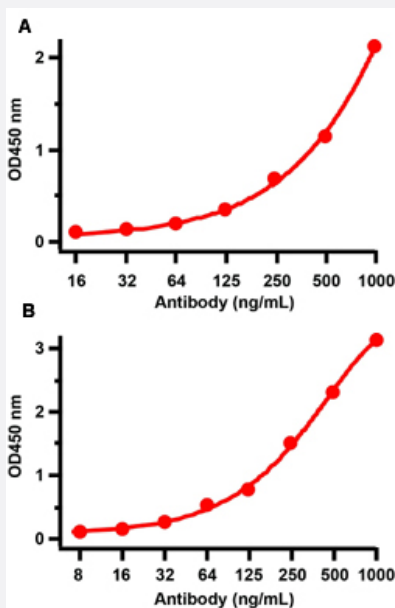
Catalog # MAB22373 Size 100 ug

Applications



Western Blot (Recombinant protein)

Western Blot with human recombinant protein. Loading: 50 ng per lane of human nucleocapsid recombinant protein. Antibodies: SARS-CoV N monoclonal antibody, clone 3861 (Cat # MAB22373), 1 h incubation at RT in 5% NFDM/TBST. Secondary: Goat anti-mouse IgG HRP conjugate at 1:5000 dilution. Lane 1: 1 ug/mL, Lane 2: 2 ug/mL.



Enzyme-linked Immunoabsorbent Assay

An ELISA was performed (A) using human SARS-CoV-2 Nucleocapsid recombinant protein as coating antigen and the SARS-CoV N monoclonal antibody, clone 3861 (Cat # MAB22373), as the capture antibody. Secondary: Goat anti-mouse IgG HRP conjugate at 1:20000 dilution. Detection range is from 16 ng/mL to 1000 ng/mL. (B) using human SARS-CoV Nucleocapsid recombinant protein as coating antigen and the SARS-CoV N monoclonal antibody, clone 3861 (Cat # MAB22373), as the capture antibody. Secondary: Goat anti-mouse IgG HRP conjugate at 1:20000 dilution. Detection range is from 8 ng/mL to 1000 ng/mL.

Specification

Product Description	Mouse monoclonal antibody raised against recombinant SARS-CoV N.
Immunogen	Recombinant protein corresponding to amino acids 1-49 of SARS-CoV Nucleoprotein.
Host	Mouse

Reactivity	SARS-CoV
Specificity	Specific for the nucleoprotein of the SARS-CoV-2 (lower reactivity) and the SARS-CoV (higher reactivity). This antibody cross react with native SARS virus and with recombinant Covid-19 NP. They do not cross react with native MERS virus.
Form	Liquid
Purification	Protein A chromatography or sequential differential precipitations
Isotype	IgG1
Recommend Usage	ELISA Immunofluorescence Western Blot The optimal working dilution should be determined by the end user.
Storage Buffer	In 0.01 M PBS, pH 7.2 (0.09% sodium azide).
Storage Instruction	Store at -20°C. Aliquot to avoid repeated freezing and thawing.
Note	This product contains sodium azide: a POISONOUS AND HAZARDOUS SUBSTANCE which should be handled by trained staff only.

Applications

- Western Blot (Recombinant protein)

Western Blot with human recombinant protein. Loading: 50 ng per lane of human nucleocapsid recombinant protein. Antibodies: SARS-CoV N monoclonal antibody, clone 3861 (Cat # MAB22373), 1 h incubation at RT in 5% NFD/TBST. Secondary: Goat anti-mouse IgG HRP conjugate at 1:5000 dilution. Lane 1: 1 ug/mL, Lane 2: 2 ug/mL.

- Immunofluorescence

- Enzyme-linked Immunoabsorbent Assay

An ELISA was performed (A) using human SARS-CoV-2 Nucleocapsid recombinant protein as coating antigen and the SARS-CoV N monoclonal antibody, clone 3861 (Cat # MAB22373), as the capture antibody. Secondary: Goat anti-mouse IgG HRP conjugate at 1:20000 dilution. Detection range is from 16 ng/mL to 1000 ng/mL. (B) using human SARS-CoV Nucleocapsid recombinant protein as coating antigen and the SARS-CoV N monoclonal antibody, clone 3861 (Cat # MAB22373), as the capture antibody. Secondary: Goat anti-mouse IgG HRP conjugate at 1:20000 dilution. Detection range is from 8 ng/mL to 1000 ng/mL.