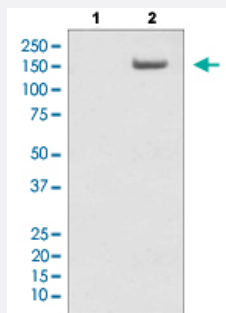


# SMC1A (phospho S957) monoclonal antibody, clone FCI-19

Catalog # MAB22316

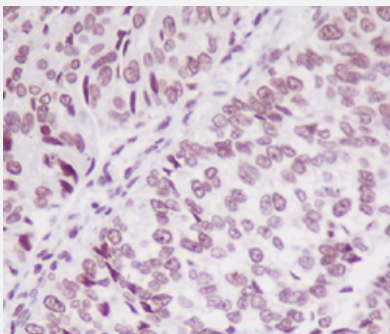
Size 100 uL

## Applications



### Western Blot (Cell lysate)

Western blot analysis of Phospho-SMC1A (S957) expression in Lane 1: HeLa cell lysate, Lane 2: HeLa cells lysate treated with AP.



### Immunohistochemistry (Formalin/PFA-fixed paraffin-embedded sections)

Immunohistochemical staining (Formalin-fixed paraffin-embedded sections) of human bladder cancer. Phospho-SMC1A (S957) was detected in paraffin-embedded section. Heat mediated antigen retrieval was performed in citrate buffer (pH 6, epitope retrieval solution) for 20 minutes. The tissue section was blocked with 10% goat serum. The tissue section was then incubated with 1 ug/mL SMC1A (phospho S957) monoclonal antibody, clone FCI-19 overnight at 4°C. Biotinylated goat anti Rabbit IgG antibody was used as secondary antibody and incubated for 30 minutes at 37°C. The tissue section was developed using Streptavidin-Biotin-Complex (SABC) with DAB as the chromogen.

## Specification

Product Description	Rabbit monoclonal antibody raised against synthetic phosphopeptide of human SMC1A.
Immunogen	Synthetic phosphopeptide corresponding to residues surrounding S957 of human SMC1A.
Host	Rabbit
Reactivity	Human

Form	Liquid
Purification	Affinity purification
Isotype	IgG
Recommend Usage	Immunocytochemistry (1:50-1:200) Immunofluorescence(1:50-1:200) Immunohistochemistry (1:50-1:200) Western Blot (1:500-1:2000) The optimal working dilution should be determined by the end user.
Storage Buffer	In PBS, 150 mM NaCl, pH 7.4 (50% glycerol, 0.02% sodium azide).
Storage Instruction	Store at 4°C for short term. For long term storage, store at -20°C. Aliquot to avoid repeated freezing and thawing.
Note	This product contains sodium azide: a POISONOUS AND HAZARDOUS SUBSTANCE which should be handled by trained staff only.

## Applications

- Western Blot (Cell lysate)

Western blot analysis of Phospho-SMC1A (S957) expression in Lane 1: HeLa cell lysate, Lane 2: HeLa cells lysate treated with AP.

- Immunohistochemistry (Formalin/PFA-fixed paraffin-embedded sections)

Immunohistochemical staining (Formalin-fixed paraffin-embedded sections) of human bladder cancer. Phospho-SMC1A (S957) was detected in paraffin-embedded section. Heat mediated antigen retrieval was performed in citrate buffer (pH 6, epitope retrieval solution) for 20 minutes. The tissue section was blocked with 10% goat serum. The tissue section was then incubated with 1 µg/mL SMC1A (phospho S957) monoclonal antibody, clone FCI-19 overnight at 4°C. Biotinylated goat anti Rabbit IgG antibody was used as secondary antibody and incubated for 30 minutes at 37°C. The tissue section was developed using Streptavidin-Biotin-Complex (SABC) with DAB as the chromogen.

- Immunocytochemistry

- Immunofluorescence

## Gene Info — SMC1A

Entrez GeneID	<a href="#">8243</a>
Protein Accession#	<a href="#">Q14683</a>
Gene Name	SMC1A

Gene Alias	CDLS2, DKFZp686L19178, DXS423E, KIAA0178, MGC138332, SB1.8, SMC1, SMC1L1, SMC1alpha, SMCB
Gene Description	structural maintenance of chromosomes 1A
Omim ID	<a href="#">300040</a> <a href="#">300590</a>
Gene Ontology	<a href="#">Hyperlink</a>
Gene Summary	<p>Proper cohesion of sister chromatids is a prerequisite for the correct segregation of chromosomes during cell division. The cohesin multiprotein complex is required for sister chromatid cohesion. This complex is composed partly of two structural maintenance of chromosomes (SMC) proteins, SMC3 and either SMC1L2 or the protein encoded by this gene. Most of the cohesin complexes dissociate from the chromosomes before mitosis, although those complexes at the kinetochore remain. Therefore, the encoded protein is thought to be an important part of functional kinetochores. In addition, this protein interacts with BRCA1 and is phosphorylated by ATM, indicating a potential role for this protein in DNA repair. This gene, which belongs to the SMC gene family, is located in an area of the X-chromosome that escapes X inactivation. [provided by RefSeq]</p>
Other Designations	OTTHUMP00000061876 SMC1 (structural maintenance of chromosomes 1, yeast)-like 1 SMC1 structural maintenance of chromosomes 1-like 1 segregation of mitotic chromosomes 1

## Pathway

- [Cell cycle](#)

## Disease

- [De Lange Syndrome](#)