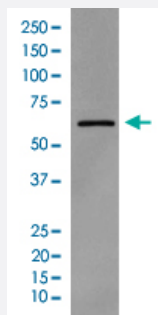


# SRC (phospho Y419) monoclonal antibody, clone DDH-19

Catalog # MAB22313      Size 100 uL

## Applications



### Western Blot (Cell lysate)

Western Blot analysis of Phospho-SRC (Y419) expression in A-431 cell lysate treated with pervanadate.

## Specification

<b>Product Description</b>	Rabbit monoclonal antibody raised against synthetic phosphopeptide of human SRC.
<b>Immunogen</b>	Synthetic phosphopeptide corresponding to residues surrounding Y419 of human SRC.
<b>Host</b>	Rabbit
<b>Reactivity</b>	Human
<b>Form</b>	Liquid
<b>Purification</b>	Affinity purification
<b>Isotype</b>	IgG
<b>Recommend Usage</b>	Flow Cytometry (1:30) Western Blot (1:500-1:2000) The optimal working dilution should be determined by the end user.
<b>Storage Buffer</b>	In PBS, 150 mM NaCl, pH 7.4 (50% glycerol, 0.02% sodium azide).
<b>Storage Instruction</b>	Store at 4°C for short term. For long term storage, store at -20°C. Aliquot to avoid repeated freezing and thawing.

**Note**

This product contains sodium azide: a POISONOUS AND HAZARDOUS SUBSTANCE which should be handled by trained staff only.

## Applications

- Western Blot (Cell lysate)

Western Blot analysis of Phospho-SRC (Y419) expression in A-431 cell lysate treated with pervanadate.

- Flow Cytometry

## Gene Info — SRC

**Entrez GeneID** [6714](#)

**Protein Accession#** [P12931](#)

**Gene Name** SRC

**Gene Alias** ASV, SRC1, c-SRC, p60-Src

**Gene Description** v-src sarcoma (Schmidt-Ruppin A-2) viral oncogene homolog (avian)

**Omim ID** [190090](#)

**Gene Ontology** [Hyperlink](#)

**Gene Summary** This gene is highly similar to the v-src gene of Rous sarcoma virus. This proto-oncogene may play a role in the regulation of embryonic development and cell growth. The protein encoded by this gene is a tyrosine-protein kinase whose activity can be inhibited by phosphorylation by c-SRC kinase. Mutations in this gene could be involved in the malignant progression of colon cancer. Two transcript variants encoding the same protein have been found for this gene. [provided by RefSeq]

**Other Designations** OTTHUMP00000174476|OTTHUMP00000174477|proto-oncogene tyrosine-protein kinase SRC|protooncogene SRC, Rous sarcoma|tyrosine kinase pp60c-src|tyrosine-protein kinase SRC-1

## Pathway

- [Adherens junction](#)
- [Endocytosis](#)
- [Epithelial cell signaling in Helicobacter pylori infection](#)

- [ErbB signaling pathway](#)
- [Focal adhesion](#)
- [Gap junction](#)
- [GnRH signaling pathway](#)
- [Tight junction](#)
- [VEGF signaling pathway](#)

## Disease

- [Genetic Predisposition to Disease](#)
- [HIV Infections](#)
- [Thyroid Neoplasms](#)