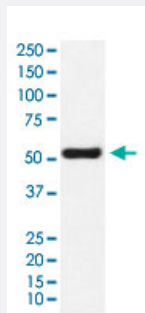


OLFM4 monoclonal antibody, clone AFEB-15

Catalog # MAB22307 Size 100 uL

Applications



Western Blot (Cell lysate)

Western Blot (cell lysate) analysis of LnCaP cell lysate.

Specification

Product Description	Rabbit monoclonal antibody raised against synthetic protein of human OLFM4.
Immunogen	A synthetic peptide corresponding to human OLFM4.
Host	Rabbit
Reactivity	Human
Specificity	This antibody reacts with human, mouse, rat OLFM4, in native form and recombinant. Superfamily members of OLFM4 are not reactive to antibody.
Form	Liquid
Purification	Affinity purification
Isotype	IgG
Recommend Usage	Western Blot (1:500-2000) The optimal working dilution should be determined by the end user.
Storage Buffer	In PBS, 150 mM NaCl, pH 7.4 (50% glycerol, 0.02% sodium azide).

Storage Instruction

Store at 4°C. For long term storage store at -20°C.
Aliquot to avoid repeated freezing and thawing.

Note

This product contains sodium azide: a POISONOUS AND HAZARDOUS SUBSTANCE which should be handled by trained staff only.

Applications

- Western Blot (Cell lysate)

Western Blot (cell lysate) analysis of LnCaP cell lysate.

Gene Info — OLFM4

Entrez GeneID[10562](#)**Protein Accession#**[Q6UX06](#)**Gene Name**

OLFM4

Gene Alias

GC1, GW112, KIAA4294, OLM4, OlfD, UNQ362, bA209J19.1, hGC-1, hOLfD

Gene Description

olfactomedin 4

Gene Ontology[Hyperlink](#)**Gene Summary**

This gene was originally cloned from human myeloblasts and found to be selectively expressed in inflamed colonic epithelium. The protein encoded is a member of the olfactomedin-related protein family. The exact function of this gene has not yet been determined. [provided by RefSeq]

Other Designations

OTTHUMP00000018468|OTTHUMP00000018469