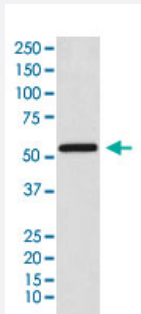


CAMK2B monoclonal antibody, clone AECO-3

Catalog # MAB22301 Size 100 uL

Applications



Western Blot (Cell lysate)

Western Blot (cell lysate) analysis of HeLa cell lysate.

Specification

Product Description	Rabbit monoclonal antibody raised against synthetic protein of human CAMK2B.
Immunogen	A synthetic peptide corresponding to human CAMK2B.
Host	Rabbit
Reactivity	Human
Specificity	This antibody reacts with human, mouse, rat CAMK2B, in native form and recombinant. Superfamily members of CAMK2B are not reactive to antibody.
Form	Liquid
Purification	Affinity purification
Isotype	IgG
Recommend Usage	Western Blot (1:500-2000) The optimal working dilution should be determined by the end user.
Storage Buffer	In PBS, 150 mM NaCl, pH 7.4 (50% glycerol, 0.02% sodium azide).

Storage Instruction

Store at 4°C. For long term storage store at -20°C.
Aliquot to avoid repeated freezing and thawing.

Note

This product contains sodium azide: a POISONOUS AND HAZARDOUS SUBSTANCE which should be handled by trained staff only.

Applications

- Western Blot (Cell lysate)

Western Blot (cell lysate) analysis of HeLa cell lysate.

Gene Info — CAMK2B

Entrez GeneID[816](#)**Protein Accession#**[Q13554](#)**Gene Name**

CAMK2B

Gene Alias

CAM2, CAMK2, CAMKB, MGC29528

Gene Description

calcium/calmodulin-dependent protein kinase II beta

Omim ID[607707](#)**Gene Ontology**[Hyperlink](#)**Gene Summary**

The product of this gene belongs to the serine/threonine protein kinase family and to the Ca(2+)/calmodulin-dependent protein kinase subfamily. Calcium signaling is crucial for several aspects of plasticity at glutamatergic synapses. In mammalian cells, the enzyme is composed of four different chains: alpha, beta, gamma, and delta. The product of this gene is a beta chain. It is possible that distinct isoforms of this chain have different cellular localizations and interact differently with calmodulin. Eight transcript variants encoding eight distinct isoforms have been identified for this gene. [provided by RefSeq]

Other Designations

CaM kinase II beta subunit|CaM-kinase II beta chain|CaMK-II beta subunit|OTTHUMP00000159355|OTTHUMP00000159356|calcium/calmodulin-dependent protein kinase (CaM kinase) II beta|calcium/calmodulin-dependent protein kinase type II beta chain|proline rich cal

Pathway

- [Calcium signaling pathway](#)
- [ErbB signaling pathway](#)

- [Glioma](#)
- [GnRH signaling pathway](#)
- [Long-term potentiation](#)
- [Melanogenesis](#)
- [Neurotrophin signaling pathway](#)
- [Olfactory transduction](#)
- [Wnt signaling pathway](#)

Disease

- [Attention Deficit Disorder with Hyperactivity](#)
- [Autistic Disorder](#)
- [Cognition](#)
- [NARP](#)
- [Schizophrenia](#)
- [Schizophrenic Psychology](#)
- [Tobacco Use Disorder](#)
- [Weight Gain](#)