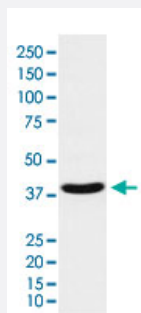


# VPS26A monoclonal antibody, clone AEEE-22

Catalog # MAB22300      Size 100 uL

## Applications



### Western Blot (Cell lysate)

Western Blot (cell lysate) analysis of A-431 cell lysate.

## Specification

<b>Product Description</b>	Rabbit monoclonal antibody raised against synthetic protein of human VPS26A.
<b>Immunogen</b>	A synthetic peptide corresponding to human VPS26A.
<b>Host</b>	Rabbit
<b>Reactivity</b>	Human
<b>Specificity</b>	This antibody reacts with human, mouse, rat VPS26A, in native form and recombinant. Superfamily members of VPS26A are not reactive to antibody.
<b>Form</b>	Liquid
<b>Purification</b>	Affinity purification
<b>Isotype</b>	IgG
<b>Recommend Usage</b>	Western Blot (1:500-2000) The optimal working dilution should be determined by the end user.
<b>Storage Buffer</b>	In PBS, 150 mM NaCl, pH 7.4 (50% glycerol, 0.02% sodium azide).

**Storage Instruction**

Store at 4°C. For long term storage store at -20°C.  
Aliquot to avoid repeated freezing and thawing.

**Note**

This product contains sodium azide: a POISONOUS AND HAZARDOUS SUBSTANCE which should be handled by trained staff only.

## Applications

- Western Blot (Cell lysate)

Western Blot (cell lysate) analysis of A-431 cell lysate.

## Gene Info — VPS26A

**Entrez GeneID**[9559](#)**Protein Accession#**[O75436](#)**Gene Name**

VPS26A

**Gene Alias**

FLJ12930, HB58, Hbeta58, PEP8A, VPS26

**Gene Description**

vacuolar protein sorting 26 homolog A (S. pombe)

**Omim ID**[605506](#)**Gene Ontology**[Hyperlink](#)**Gene Summary**

This gene belongs to a group of vacuolar protein sorting (VPS) genes. The encoded protein is a component of a large multimeric complex, termed the retromer complex, involved in retrograde transport of proteins from endosomes to the trans-Golgi network. The close structural similarity between the yeast and human proteins that make up this complex suggests a similarity in function. Expression studies in yeast and mammalian cells indicate that this protein interacts directly with VPS35, which serves as the core of the retromer complex. Alternative splicing results in multiple transcript variants encoding different isoforms. [provided by RefSeq]

**Other Designations**

OTTHUMP00000019721|vacuolar protein sorting 26 A

## Disease

- [Alzheimer disease](#)
- [Genetic Predisposition to Disease](#)
- [Urinary Bladder Neoplasms](#)